

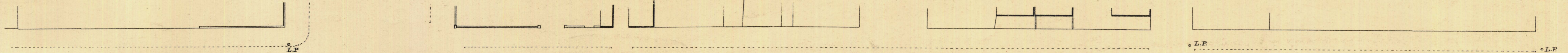
SOUTH ADELAIDE

Sheet N^o 29.

YOUNG WARD

KEY TO ADJOINING SHEETS

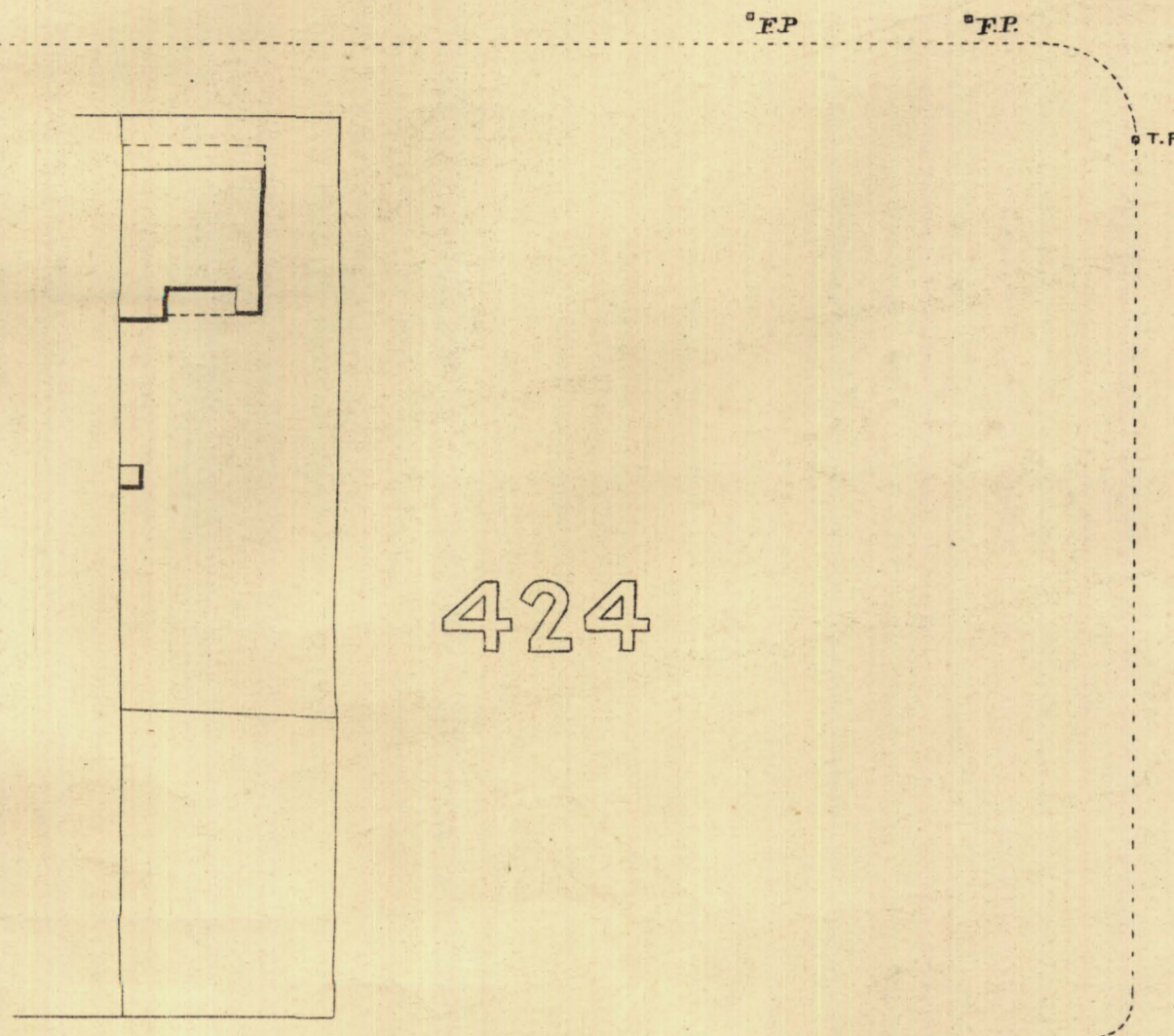
43	44
30	28
25	26 27



269-73

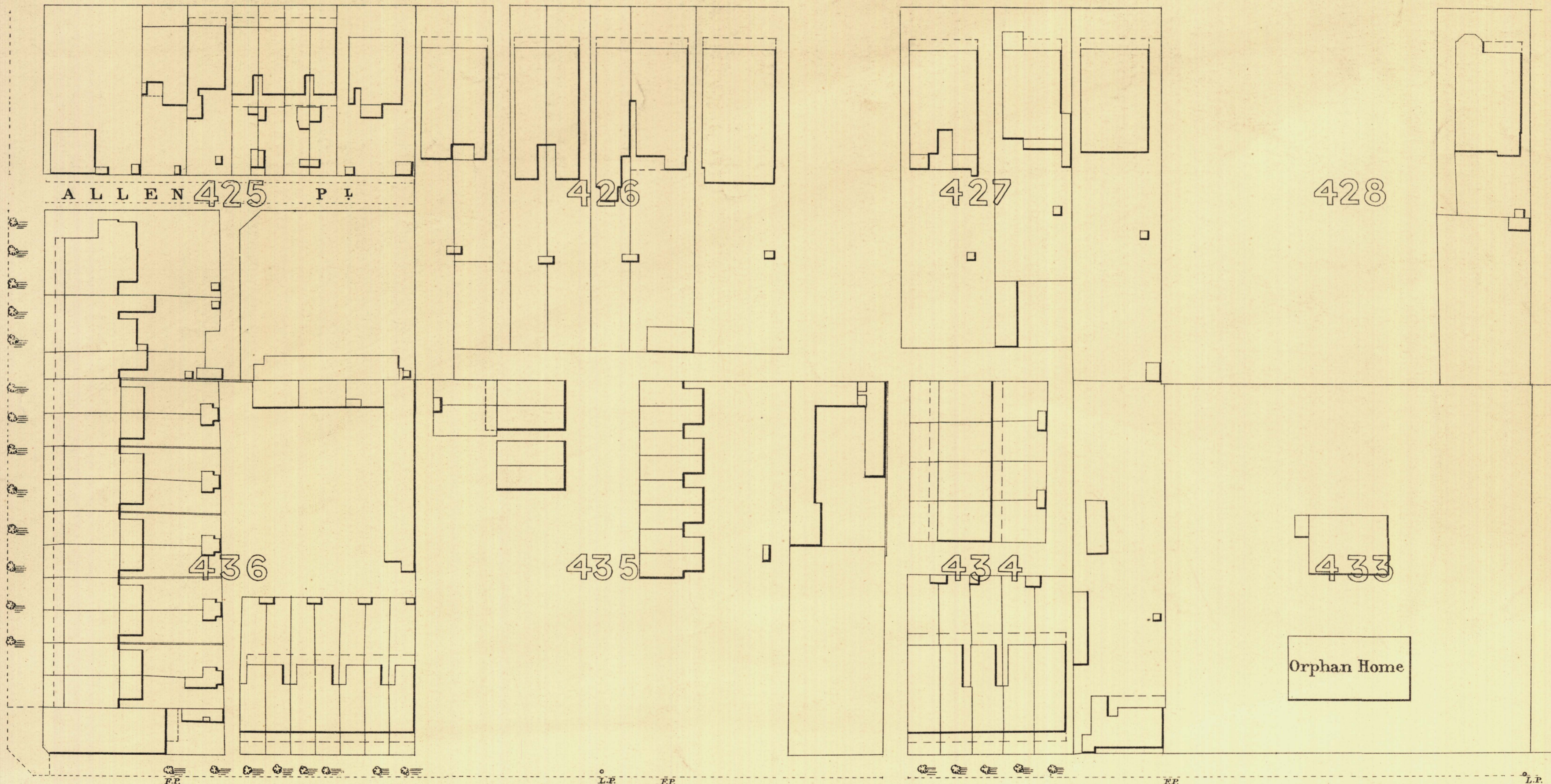
A N G A S T R E E T

268-49



424

T. S.



ALLEN 425 PL

426

427

428

H U M E S T

271-62

T

U

T

H

A

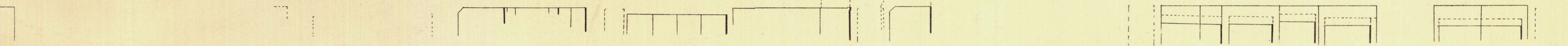
C A R R I N G T O N S T

270-86

272-86

275-23

275-59



L. Smith Mayor

Thomas ... Town Clerk

Scale Forty Feet to One Inch

SURVEYOR GENERAL'S OFFICE, ADELAIDE.

REFERENCE

Town Acres shown thus	— [] —	Fire Plugs shown thus	— [] —
Stone Buildings	— [] —	Stop-cocks	— [] —
Brick do	— [] —	Stand-pipes	— [] —
Wood and Iron do	— [] —	Lamp-posts	— [] —
Pillar Post-offices	— [] —	Telegraph-posts	— [] —
Levels	— [] —	Datum 100 Feet below Low-water at Port Adelaide.	

Charles W. Smith
City Engineer
Licensed Surveyor R.P.A.