

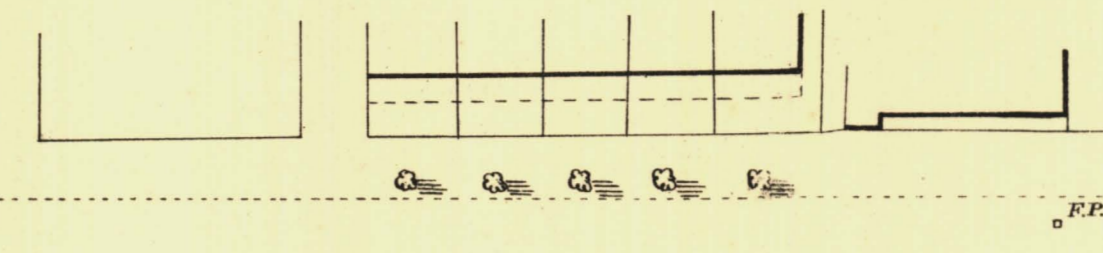
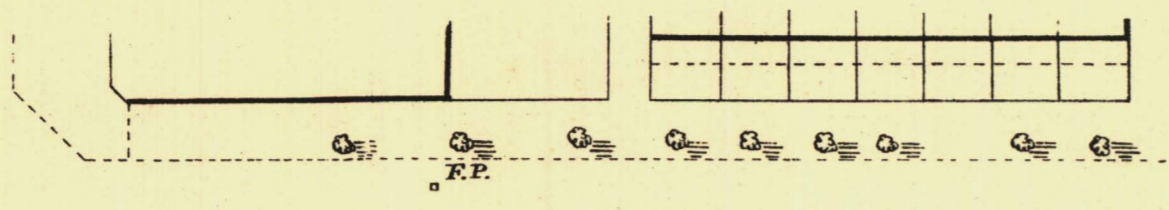
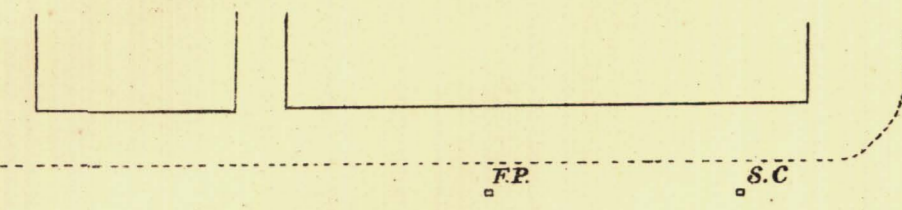
SOUTH ADELAIDE

Sheet N^o 26.

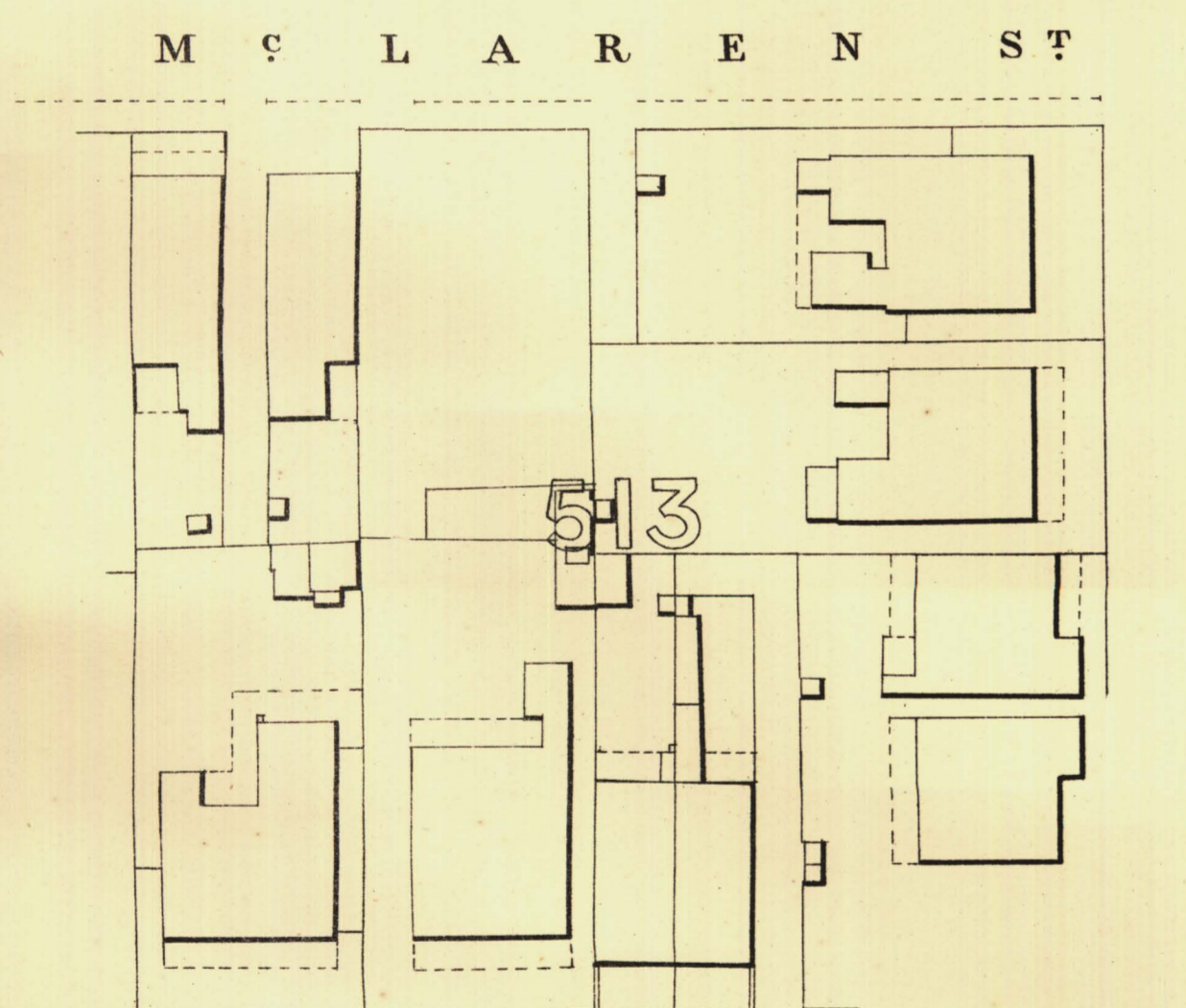
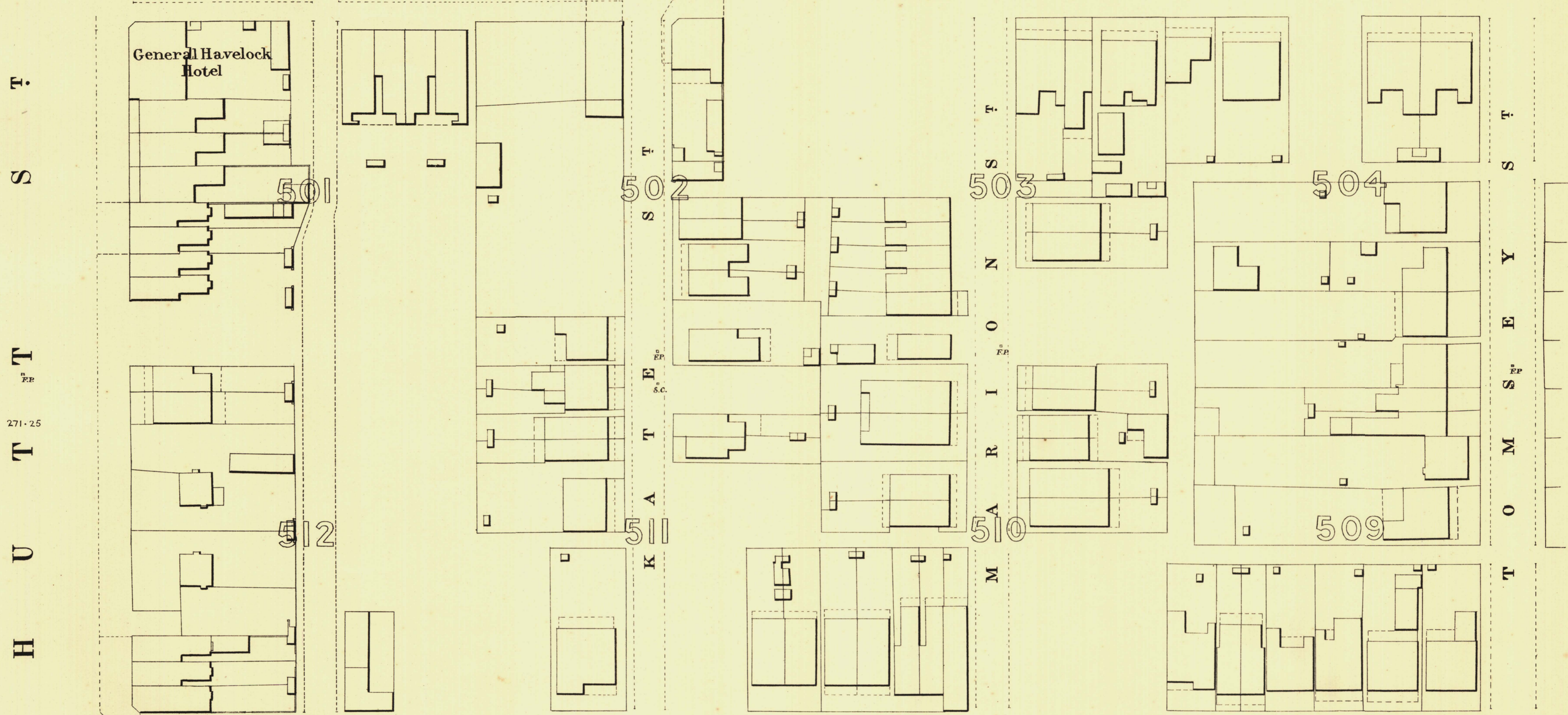
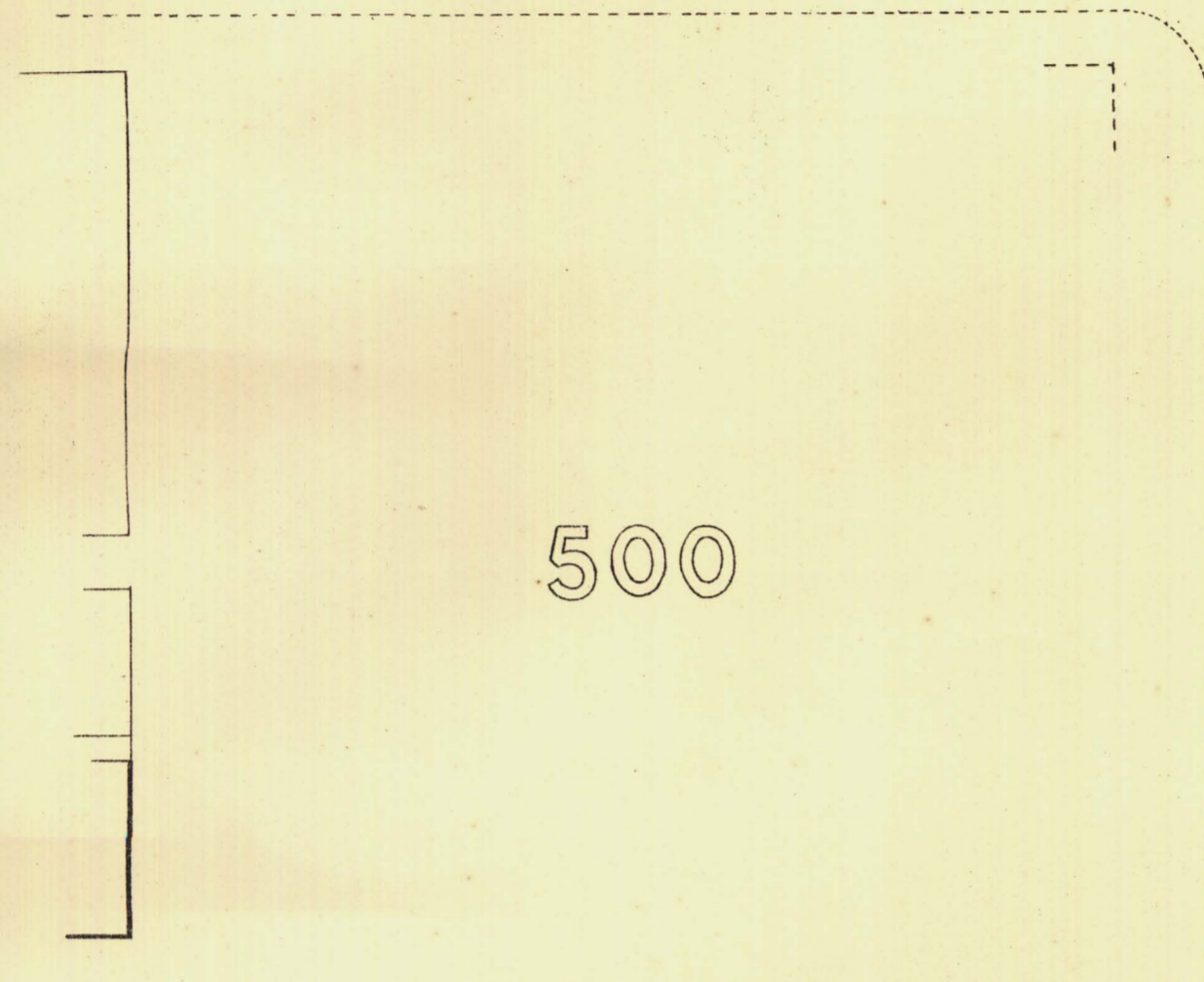
YOUNG WARD

KEY TO ADJOINING SHEETS

30	29	28
26	27	27
12	11	10



C 270-86 A R R I N 272-86 G T O N 275-23 S T 275-59



H 269-73 A L I F A 271-96 X S T 273-65

267-95

274-80



L. Smith Mayor

Thomas Horn Town Clerk

100 Feet 200 300 Feet

Scale Forty Feet to One Inch

SURVEYOR GENERAL'S OFFICE, ADELAIDE. From S. Crawford, Photo Lithographer

REFERENCE

Town Acres shown thus	— — —	Fire Flays shown thus	—oFP
Stone Buildings	—	Stop-locks	—s.C.
Brick do	—	Stand pipes	—o.S.P.
Wood and Iron do	—	Lamp-posts	—o.L.P.
Pillar Post-offices	—o.P.O.	Telegraph-posts	—o.T.P.
Levels	—229-31	Datum, 100 Feet below Low-water at Port Adelaide.	

Charles W. Smith
City Engineer
Licensed Surveyor R.P.A.