

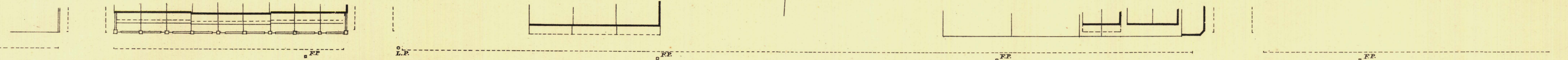
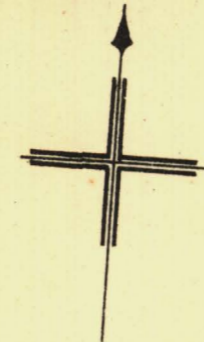
SOUTH ADELAIDE

Sheet N^o 25

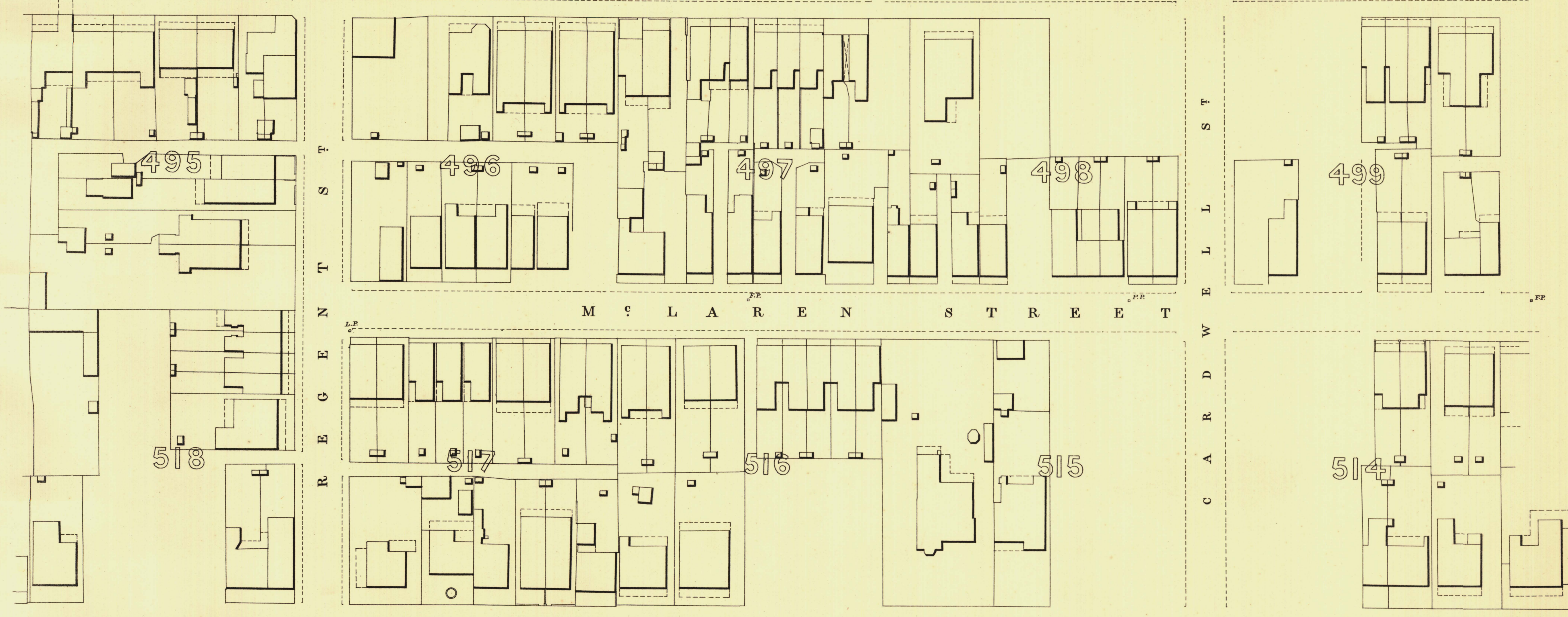
YOUNG WARD

KEY TO ADJOINING SHEETS

31	30	29
24	25	26
13	12	11

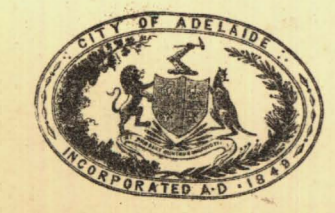
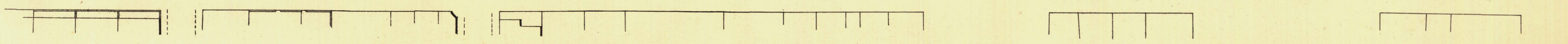


C 264-40 A R R 266-38 I N G T O 268-22 N S T 269-57



M C L A R E N S T R E E T

H 264-48 A L I F A 265-20 X S 266-24 T 267-95



T. Smith Mayor
Thomas W. Smith Town Clerk

Scale Forty Feet to One Inch
100 Feet 50 0 200 300 Feet

SURVEYOR GENERAL'S OFFICE ADELAIDE, Drawn & Engraved, Photo-lithographed

REFERENCE

Town Acres shown thus	□	Fire Plugs shown thus	□
Stone Buildings	▤	Stop-cocks	SC
Brick do	▥	Stand-pipes	SP
Wood and Iron do	▧	Lamp-posts	LP
Pillar Post-offices	PO	Telegraph-posts	TP
Levels	229-31	Datum 100 Feet below Low-water at Port Adelaide.	

Charles W. Smith
City Engineer
Licensed Surveyor R.F.A.