

SOUTH ADELAIDE

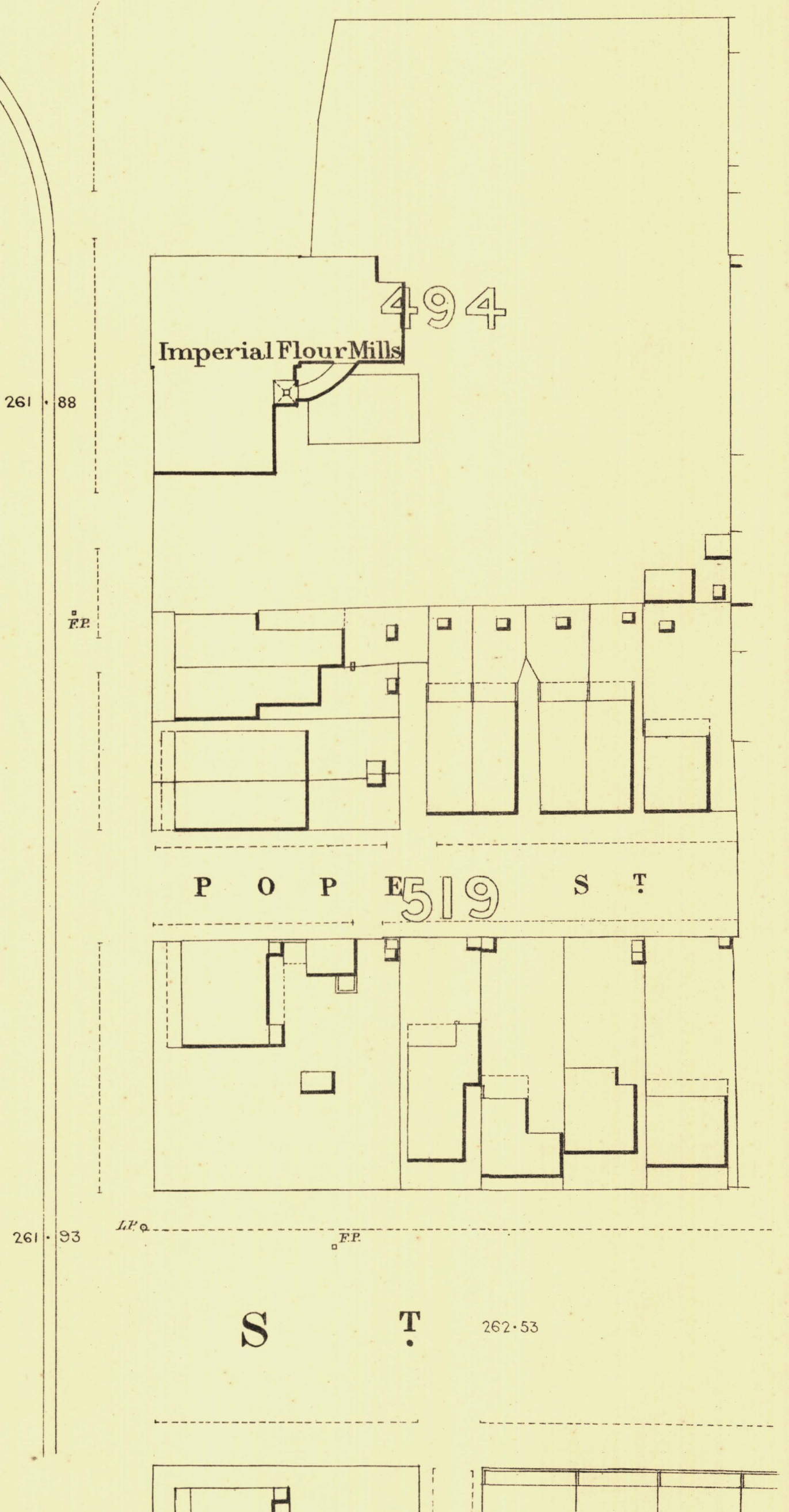
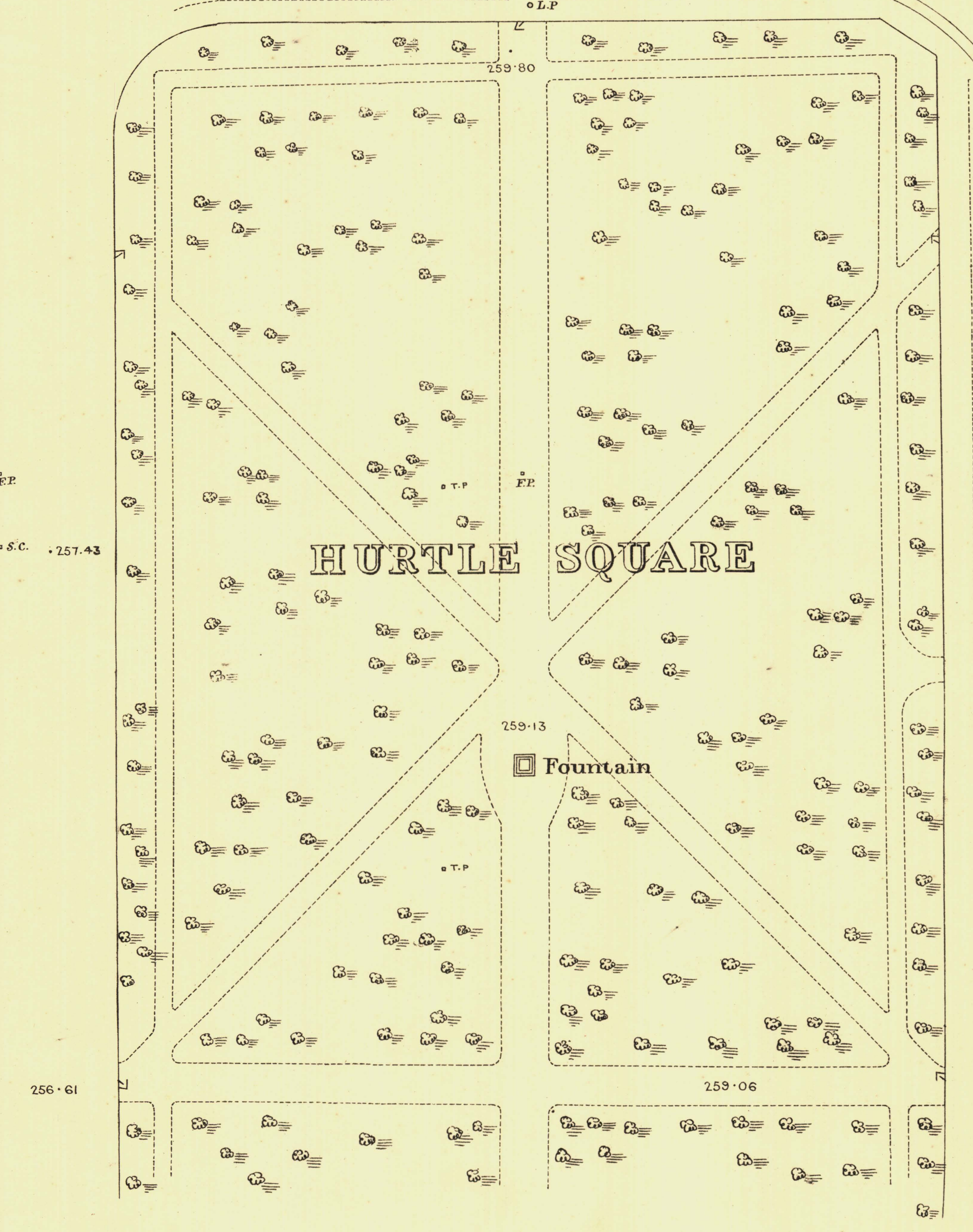
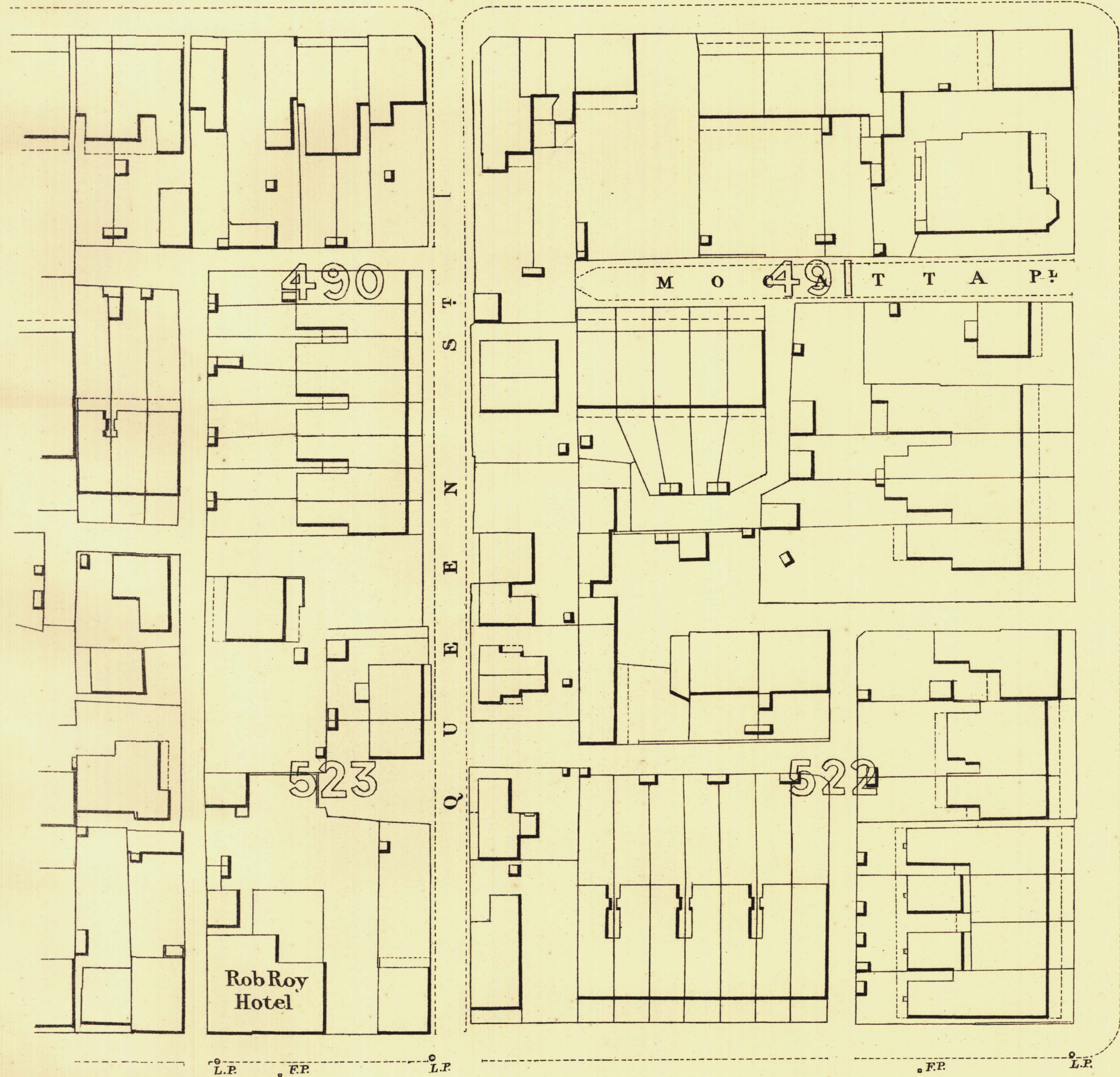
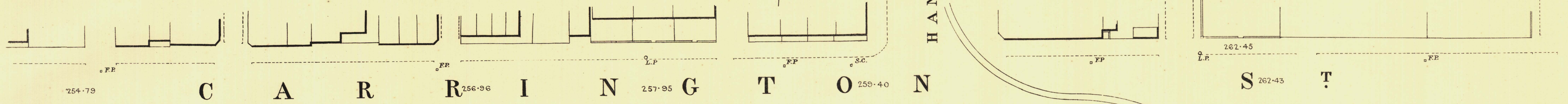
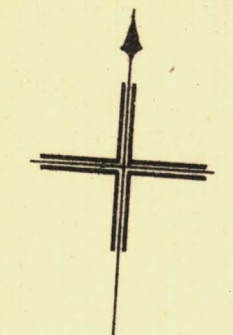
Sheet N<sup>o</sup> 24.

YOUNG WARD

HANSON ST

KEY TO ADJOINING SHEETS

32	31	30
23	25	24
14	13	12



*L. Smith* Mayor  
*Thomas Brown* Town Clerk

Scale Forty Feet to One Inch  
 100 Feet 50 0 200 300 Feet.

SURVEYOR GENERAL'S OFFICE, ADELAIDE. Drawn & Engraved by J. H. Smith.

- REFERENCE
- Town Acres shown thus - [Symbol]
  - Stone Buildings - [Symbol]
  - Brick do - [Symbol]
  - Wood and Iron do - [Symbol]
  - Pillar Post-offices - [Symbol]
  - Levels - [Symbol]
  - Fire Plugs shown thus - [Symbol]
  - Stop-cocks - [Symbol]
  - Stand pipes - [Symbol]
  - Lamp posts - [Symbol]
  - Telegraph posts - [Symbol]
  - Datum 100 Feet below Low-water at Port Adelaide - [Symbol]

*Charles W. Smith*  
 City Engineer  
 Licensed Surveyor R.P.A.