

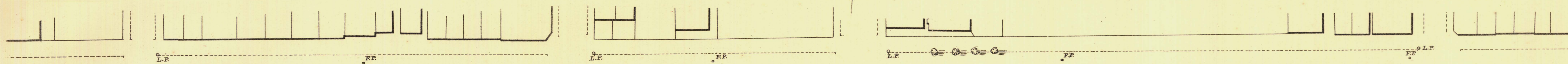
# SOUTH ADELAIDE

Sheet N<sup>o</sup> 20.

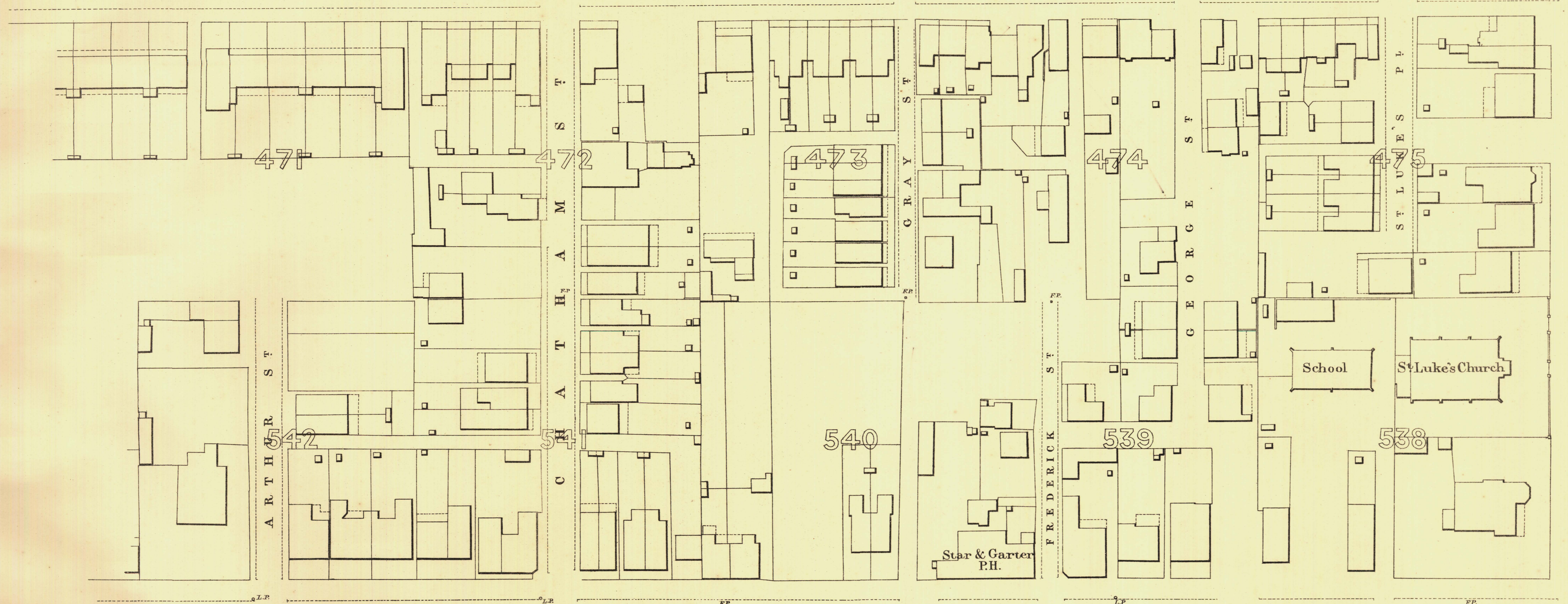
# GREY WARD

KEY TO ADJOINING SHEETS

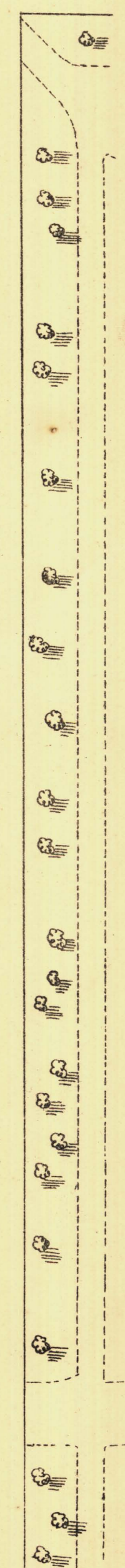
36	35	34
19		21
18	17	16



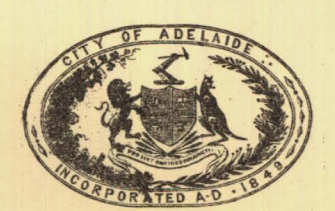
238-87      W      R      I      G      H      T      S      T      R      E      E      T      242-04



W      H      I      T      M      O      R      E      S      S      O      R      S



237-84      S      T      U      R      T      S      T      R      E      E      T      241-84      242-92



*L. Smith* Mayor

*Thomas Brown* Town Clerk

Scale Forty Feet to One Inch  
100      200      300 Feet

SURVEYOR GENERAL'S OFFICE, ADELAIDE. Drawn & Engraved by Photo-lithography

REFERENCE

Town Acres shown thus	— 1/4 —	Fire Plugs shown thus	— c.F.P. —
Stone Buildings	— [Symbol] —	Stop-cocks	— s.C. —
Brick do	— [Symbol] —	Stand-pipes	— s.P. —
Wood and Iron do	— [Symbol] —	Lamp-posts	— l.P. —
Pillar Post-offices	— [Symbol] —	Telegraph-posts	— t.P. —
Levels	— 228-31 —	Datums, 100 Feet below Low-water at Port Adelaide.	

*Charles W. Smith*  
City Engineer  
Licensed Surveyor R.F.A.