

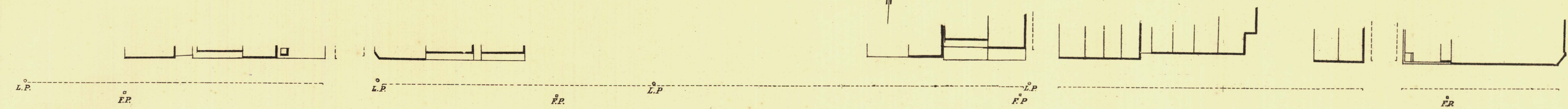
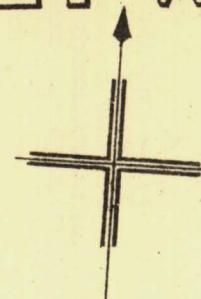
SOUTH ADELAIDE

Sheet N<sup>o</sup> 15.

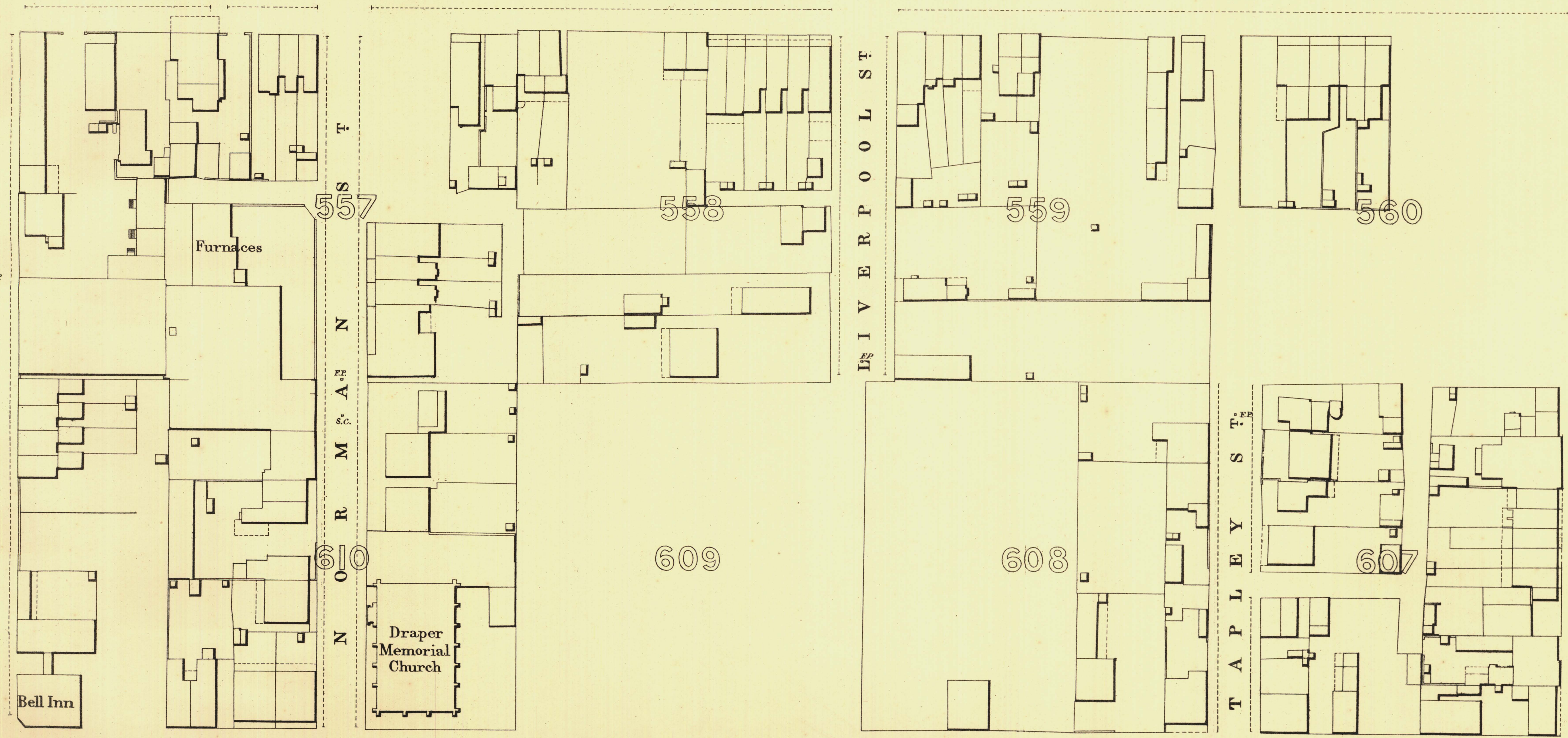
GREY WARD

KEY TO ADJOINING SHEETS

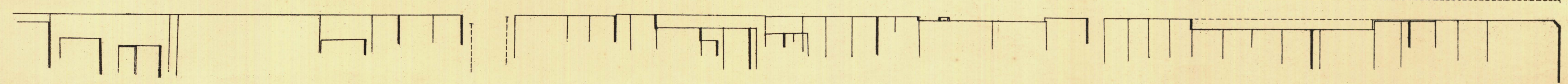
21	22	23
16	14	
3	4	5



S 248-94 T U R T 251-02 S T R E E T 252-55 T



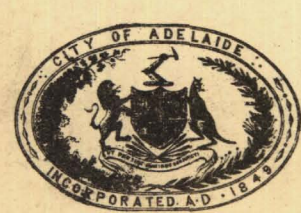
G I L B 248-80 E R T S 248-93 T R E E 248-38 T



T  
S  
M  
A  
L  
L  
I  
W  
I  
N  
K

246-48

247-93



*L. Smith* Mayor

*Thomas Horner* Town Clerk

100 Feet 50 0 100 200 300 Feet

Scale Forty Feet to One Inch

SURVEYOR GENERAL'S OFFICE, ADELAIDE, From S. Quarter, Photo-lithographer

- REFERENCE
- Town Acres shown this - 14-1
  - Stone Buildings - [Symbol]
  - Brick do - [Symbol]
  - Wood and Iron do - [Symbol]
  - Pillar Post-offices - [Symbol]
  - Levels - [Symbol]
  - Fire Flugs shown this - [Symbol]
  - Stop-acks - [Symbol]
  - Stand-pipes - [Symbol]
  - Lamp-posts - [Symbol]
  - Telegraph-posts - [Symbol]
  - Datum 100 Feet below Low-water at Fort Adelaide. - [Symbol]

*Charles W. Smith*  
City Engineer  
Licensed Surveyor R.P.A.