

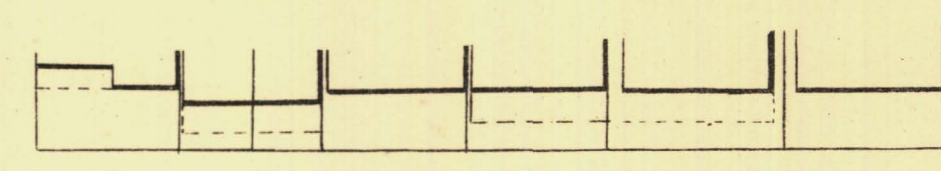
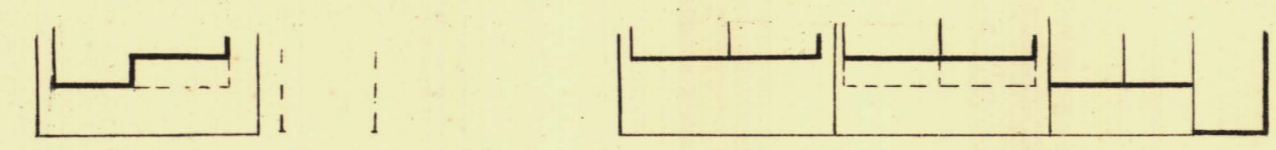
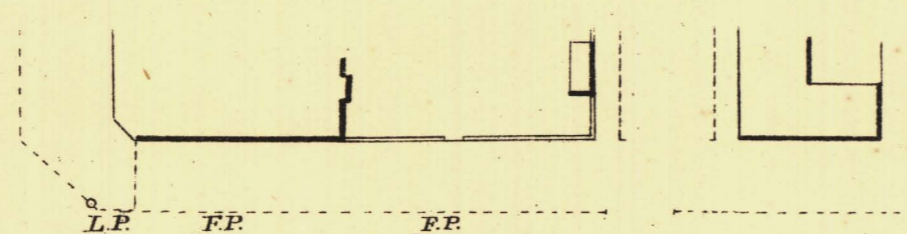
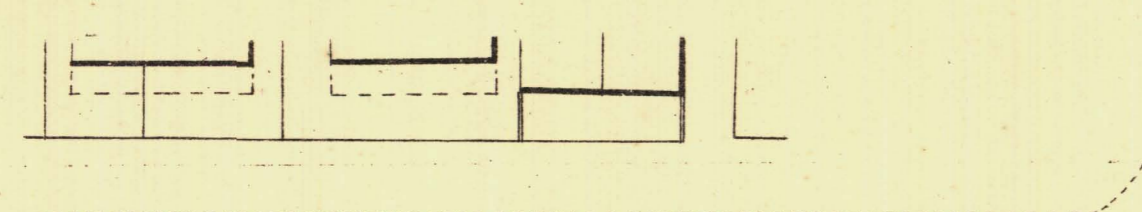
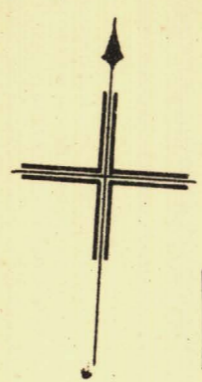
# SOUTH ADELAIDE

Sheet N<sup>o</sup> 11.

# YOUNG WARD

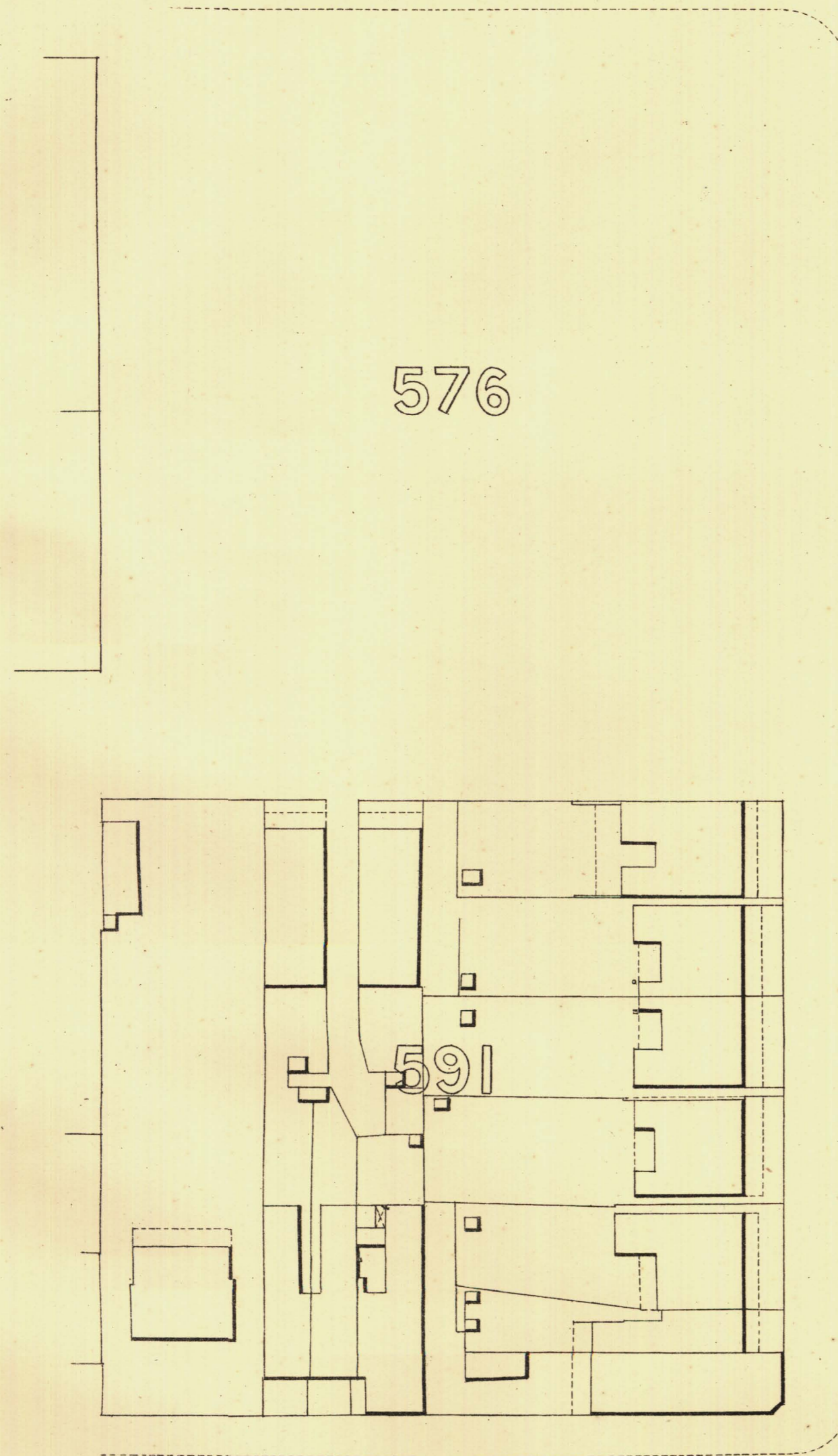
KEY TO ADJOINING SHEETS

25	26	27
12	13	10
7	8	9



267-95

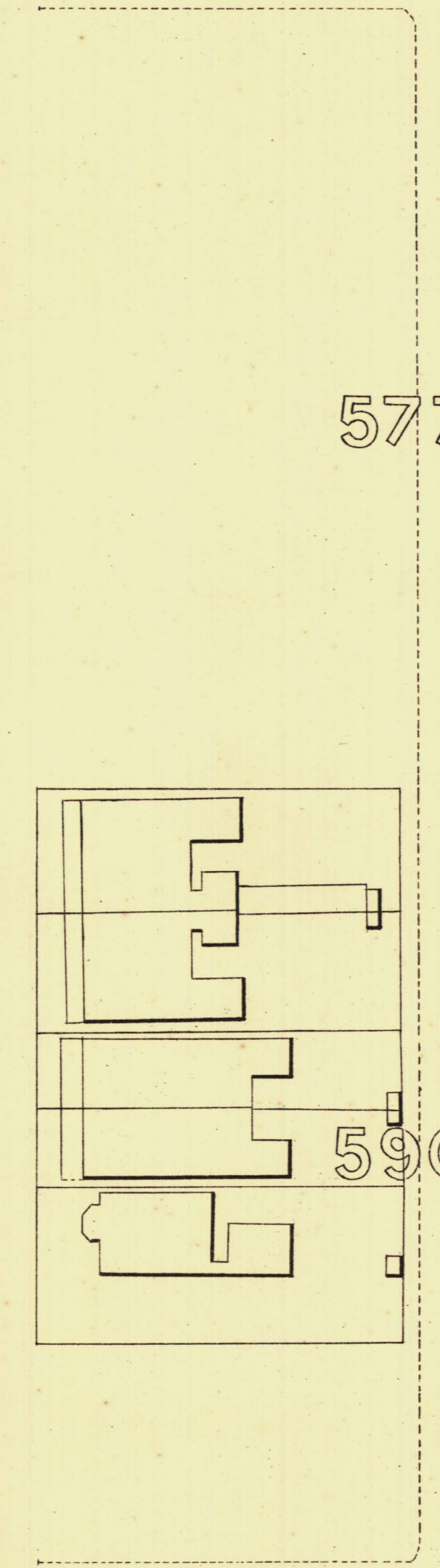
H A<sup>269-73</sup> L I F A X<sup>271-96</sup> S T<sup>273-65</sup>



576

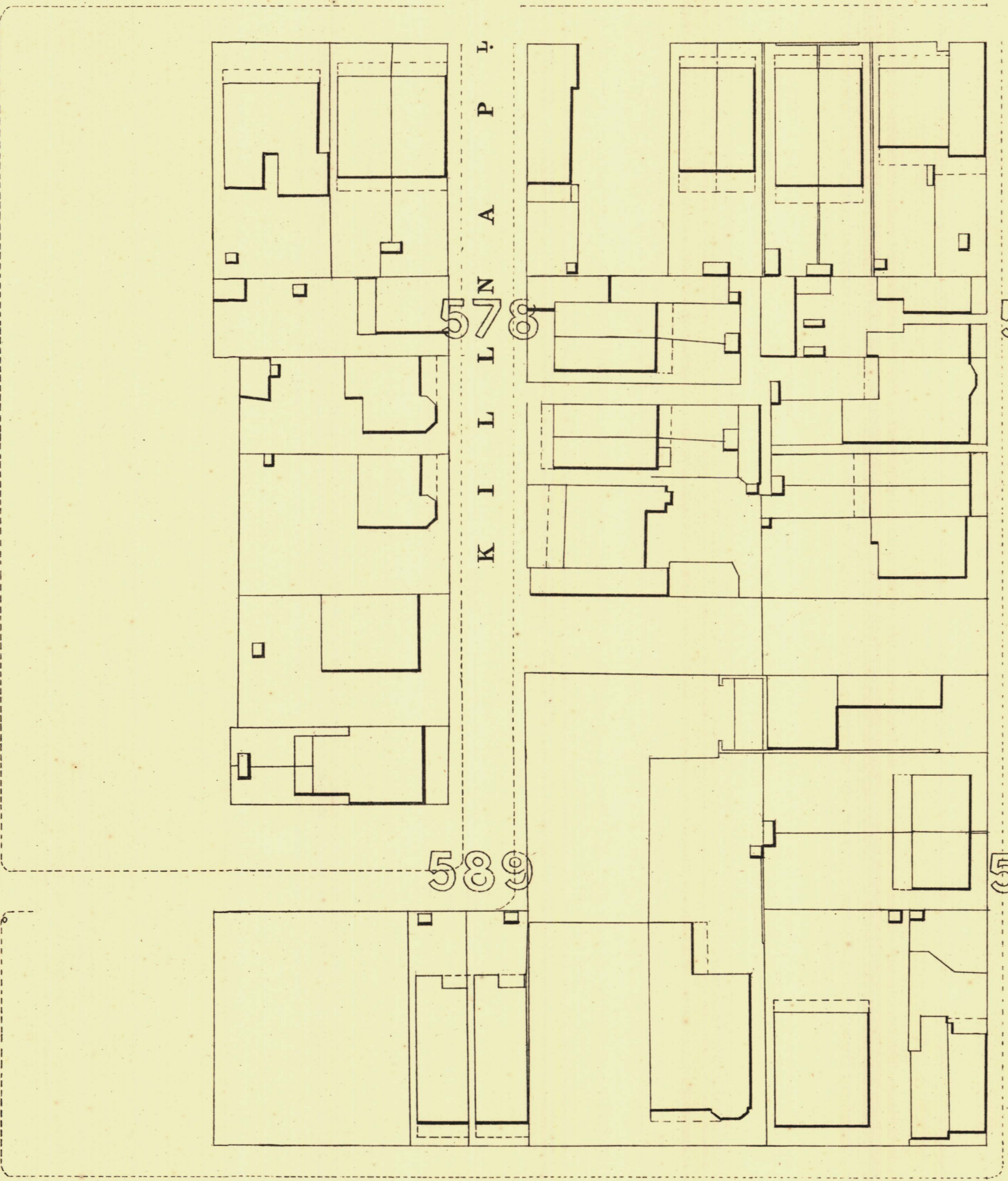
262-89

T  
S  
T  
T  
U  
H



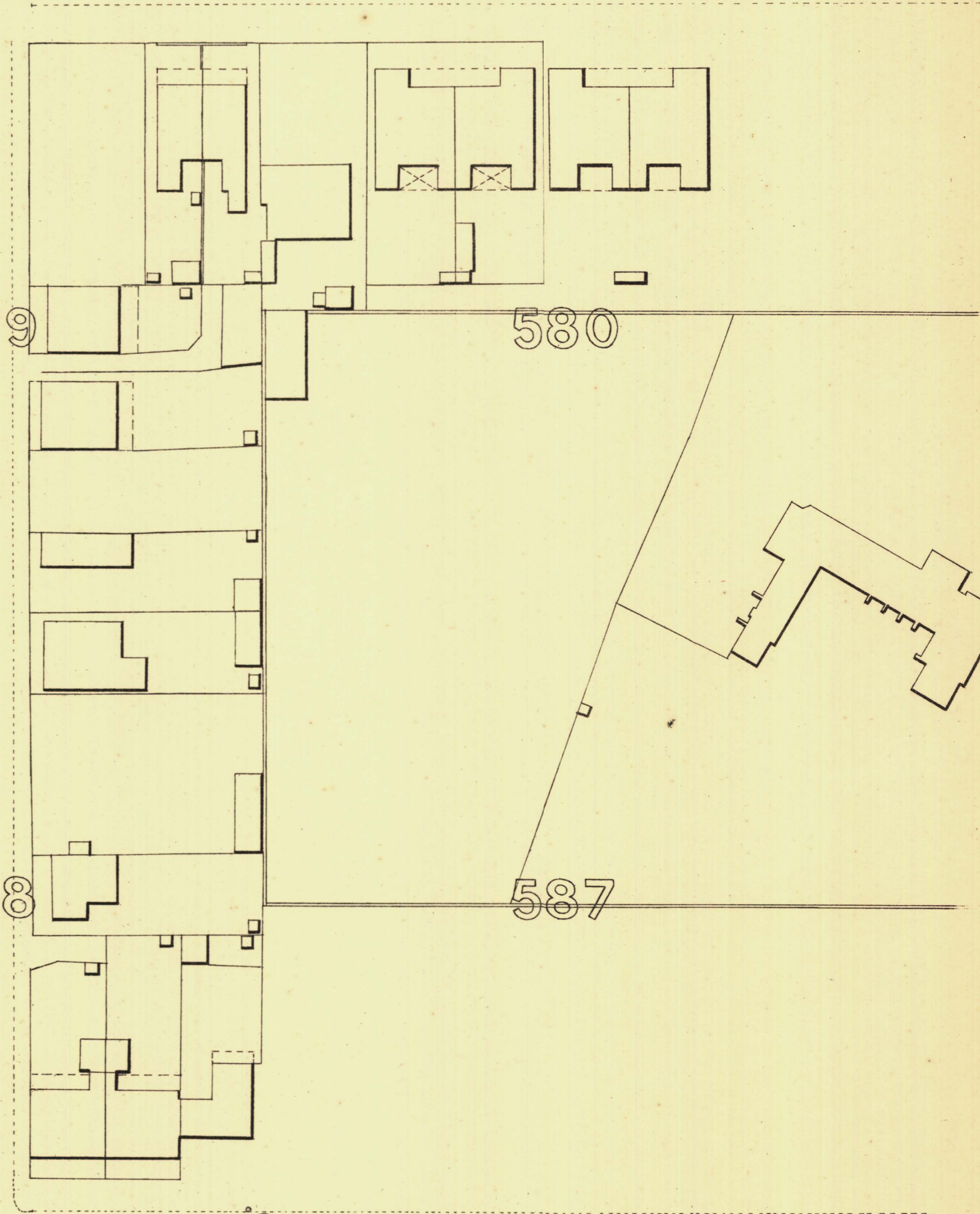
577

264-30



578

265-52



579

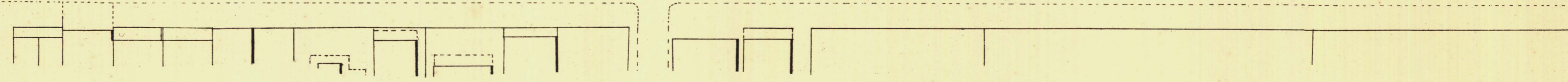
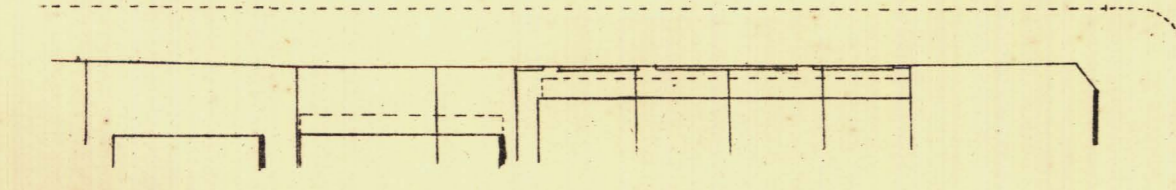
267-42

T  
S  
R  
W  
P

580

587

G I L L E S S T



*L. Smith*  
Mayor

*Thomas W. Smith*  
Town Clerk

100 Feet 50 200 300 Feet

Scale Forty Feet to One Inch  
SURVEYOR GENERAL'S OFFICE, ADELAIDE, From S. Osmond's Photolithograph

REFERENCE

Town Acres shown thus - 1/4	Fire Flays shown thus - c.F.P.
Stone Buildings - [Symbol]	Stop-cocks - s.C.
Brick do - [Symbol]	Stand-pipes - s.S.P.
Wood and Iron do - [Symbol]	Lamp-posts - G.L.P.
Pillar Post-offices - c.P.O.	Telegraph posts - G.T.P.
Levels - 229-81	Datum 100 Feet below Low-water at Port Adelaide.

*Charles W. Smith*  
City Engineer  
Licensed Surveyor R.P.A.