

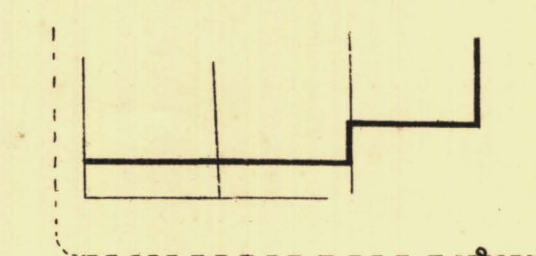
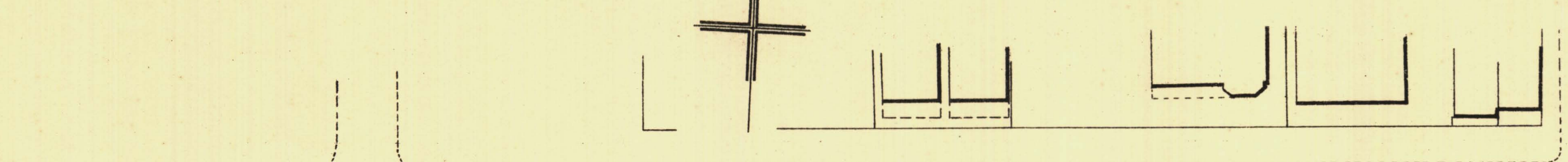
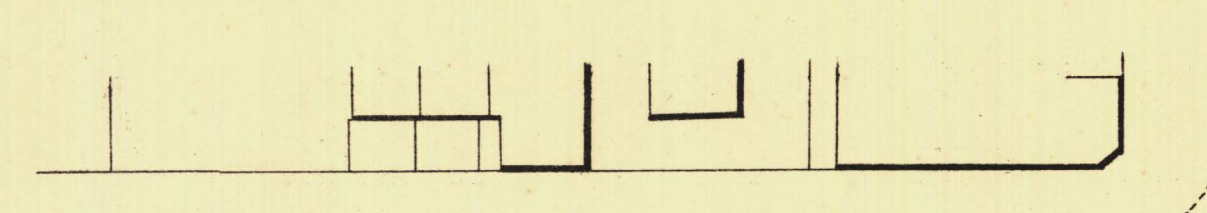
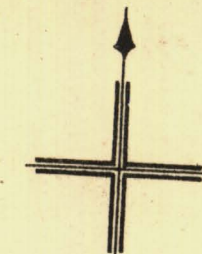
SOUTH ADELAIDE

Sheet N^o 8.

YOUNG WARD

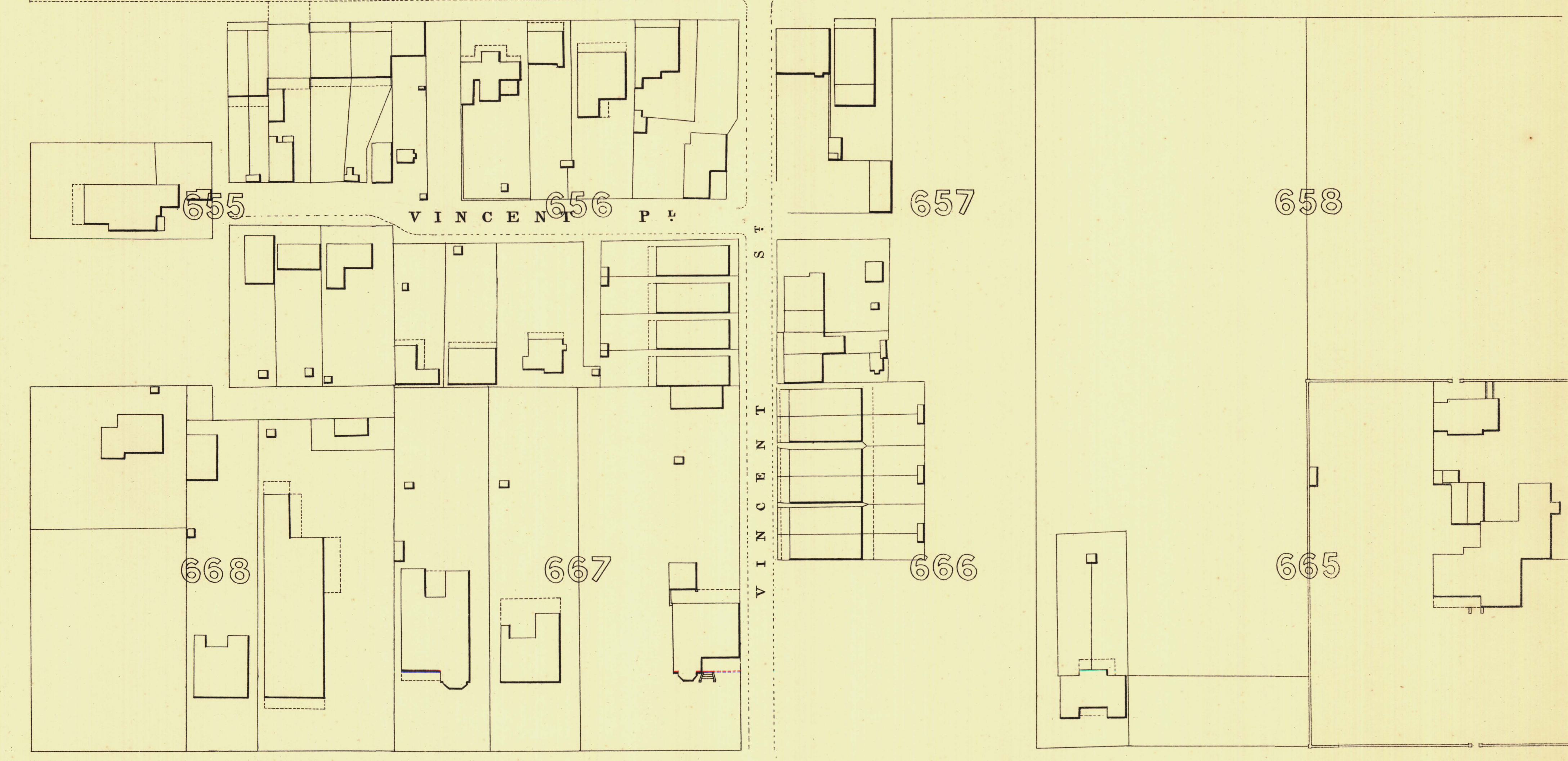
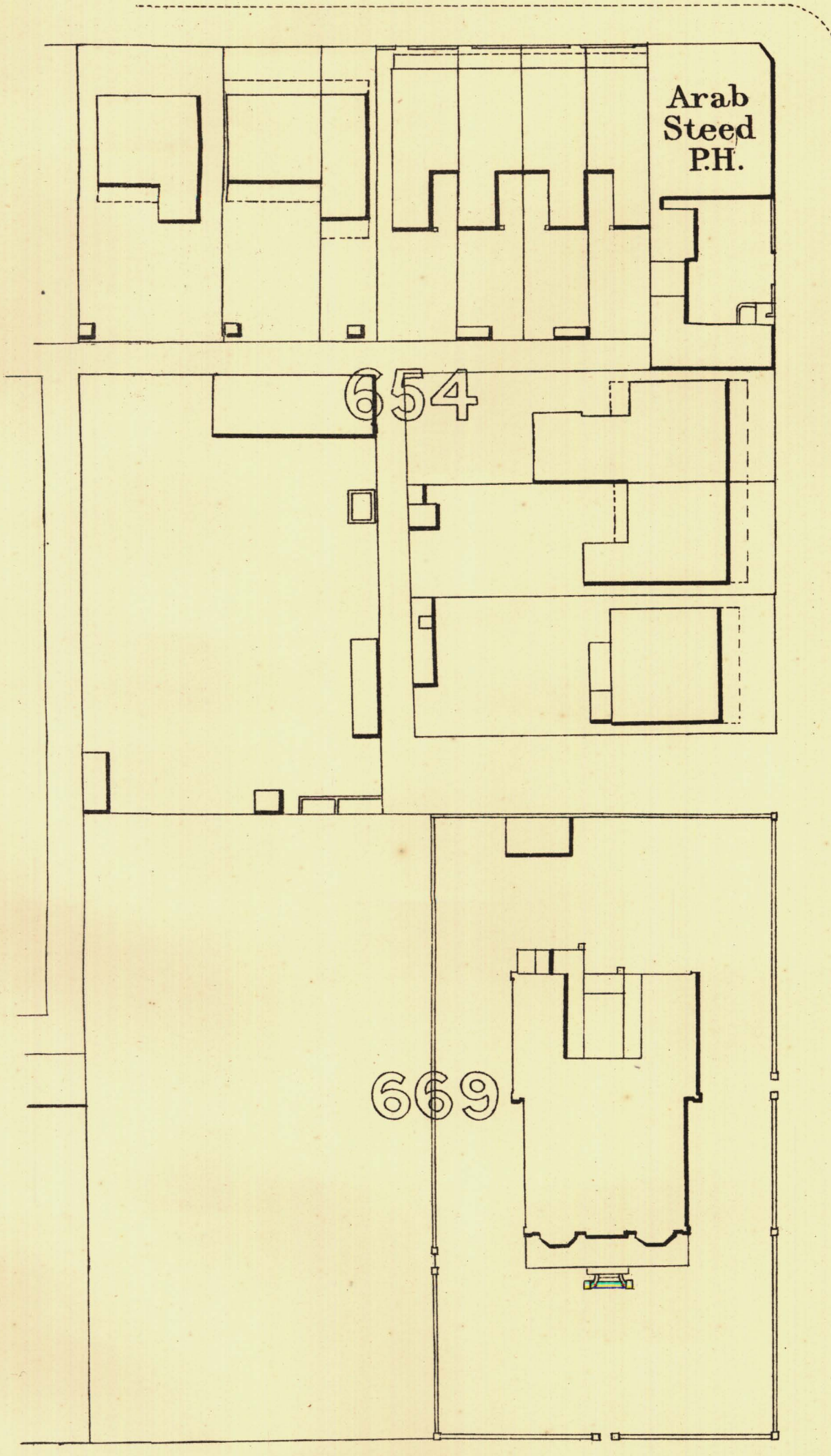
KEY TO ADJOINING SHEETS

25	26	27
12	11	10
7		9



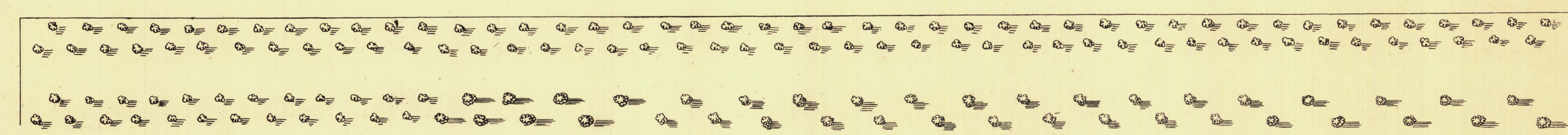
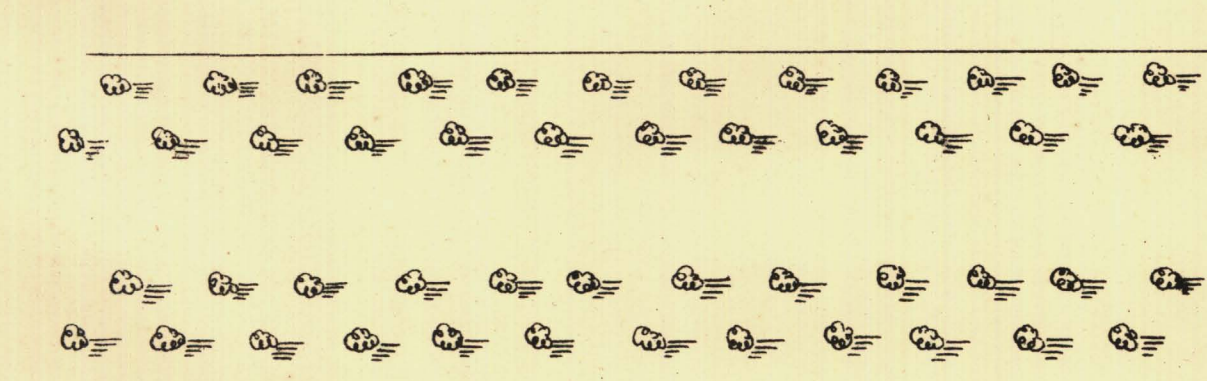
262-89

G I L E S T R E E T



258-64

S O U T H T E R T E R A C E



P A R K L A N D S



L. Smith Mayor

Thomas Horn Town Clerk

Scale Forty Feet to One Inch

SURVEYOR GENERAL'S OFFICE, ADELAIDE. *Phase 3, One-fifth, Photo-lithograph*

- Town Acres shown thus - [Symbol]
- Stone Buildings - [Symbol]
- Brick do - [Symbol]
- Wood and Iron do - [Symbol]
- Pillar Post-offices - [Symbol]
- Levels - [Symbol]
- Fire Plugs shown thus - [Symbol]
- Step-cocks - [Symbol]
- Stand pipes - [Symbol]
- Lamp-posts - [Symbol]
- Telegraph-posts - [Symbol]
- Datum 100 Feet below Low-water at Port Adelaide.

Charles W. Smith
City Engineer
Licensed Surveyor R.F.A.