

SOUTH ADELAIDE

YOUNG WARD

KEY TO ADJOINING SHEETS

Sheet N^o 7.

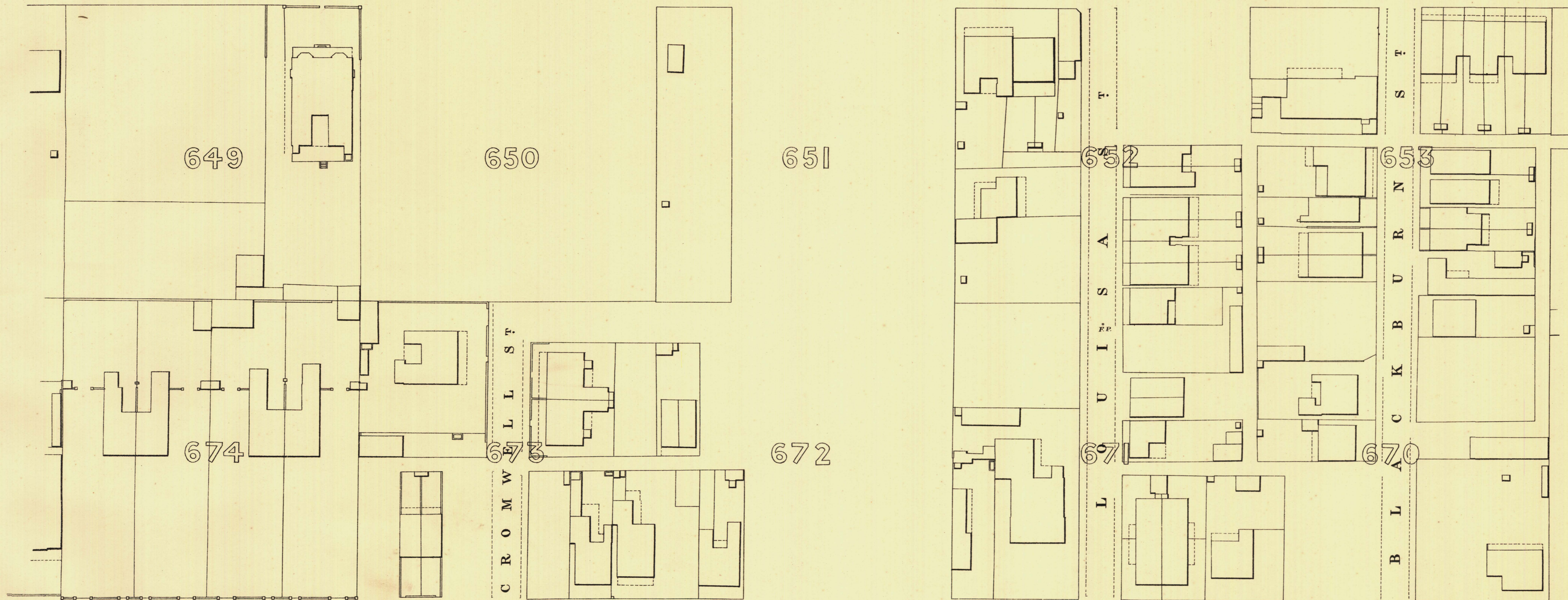
24	25	26
13	12	11
6	8	



259-88

G I L L E S S T R E E T

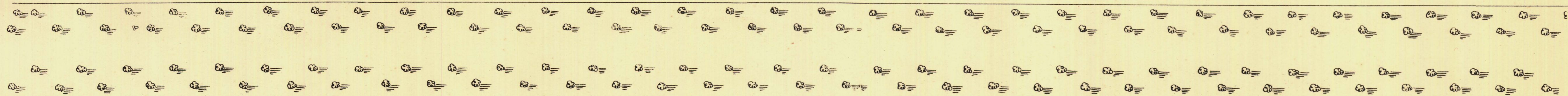
262-89



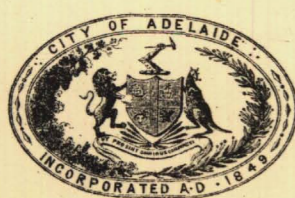
255-00

S O U T H T E R R A C E

258-64



P A R K L A N D S



L. Smith
Mayor

Thomas W. Smith
Town Clerk

100 Feet 50 0 200 300 Feet

Scale Forty Feet to One Inch

SURVEYOR GENERAL'S OFFICE, ADELAIDE. Printer: S. G. Wood, Adelaide.

REFERENCE
 Town Areas shown thus - [Symbol]
 Stone Buildings - [Symbol]
 Brick do - [Symbol]
 Wood and Iron do - [Symbol]
 Pillar Post-offices - [Symbol]
 Levels - [Symbol]
 Fire Flugs shown thus - [Symbol]
 Stop-cocks - [Symbol]
 Stand-pipes - [Symbol]
 Lamp-posts - [Symbol]
 Telegraph-posts - [Symbol]
 229-31 Datum 100 Feet below Low-water at Port Adelaide.

Charles W. Smith
City Engineer
Licensed Surveyor R.P.A.