

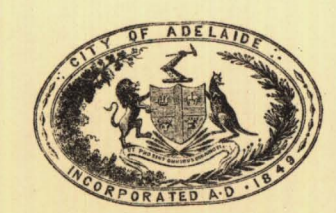
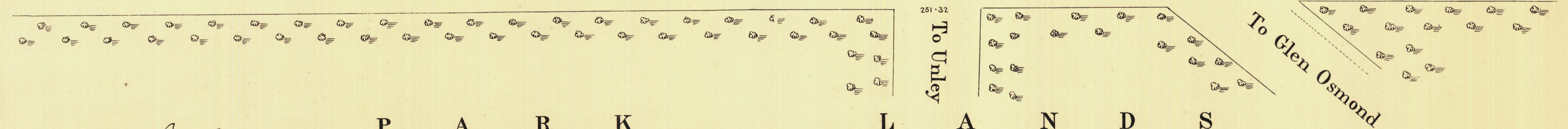
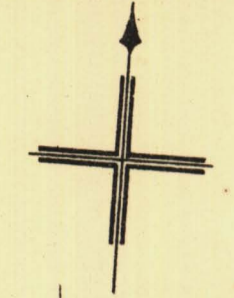
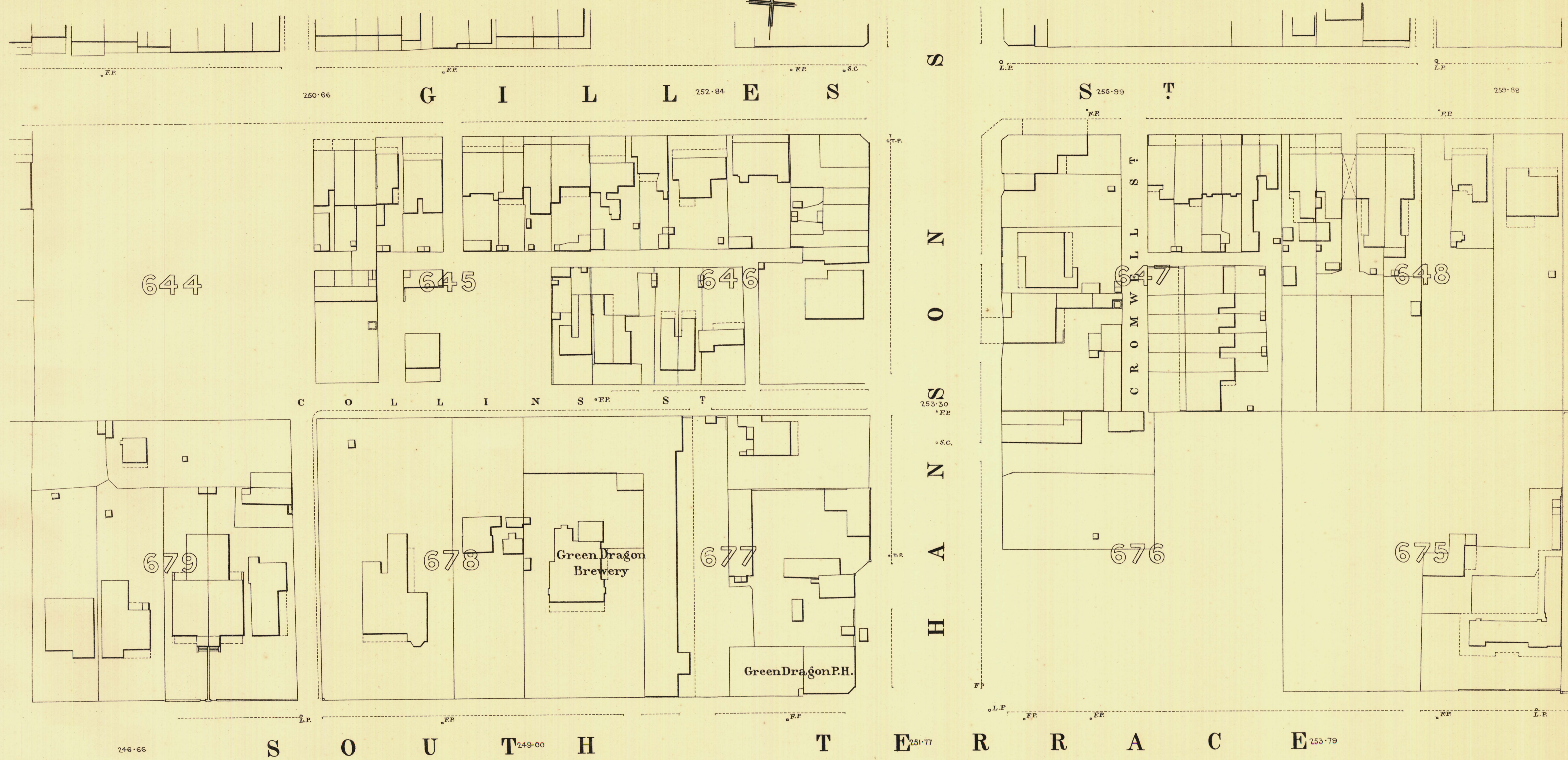
SOUTH ADELAIDE

Sheet No. 6.

YOUNG WARD

KEY TO ADJOINING SHEETS

23	24	25
14	13	12
5	7	



L. Smith
Mayor

Thomas W. Smith
Town Clerk

Scale Forty Feet to One Inch
100 Feet 50 200 300 Feet.

SURVEYOR GENERAL'S OFFICE, ADELAIDE. Drawn S. Crawford, Photo-lithographer.

REFERENCE

Town Acres shown thus	14-1	Fire Plugs shown thus	□FP
Stone Buildings	▭	Stop-cocks	•S.C.
Brick do	▭	Stand-pipes	□S.P.
Wood and Iron do	▭	Lamp-posts	○L.P.
Pillar Post-offices	□PO	Telegraph posts	○T.P.
Levels	229-31	Datum 100 Feet below Low water at Port Adelaide.	

Charles W. Smith
City Engineer
Licensed Surveyor R.P.A.