

SOUTH ADELAIDE

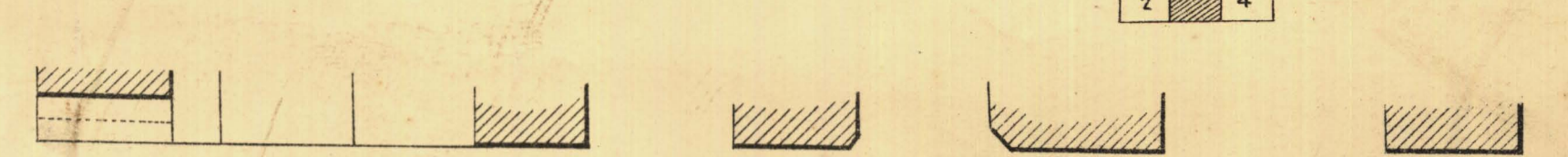
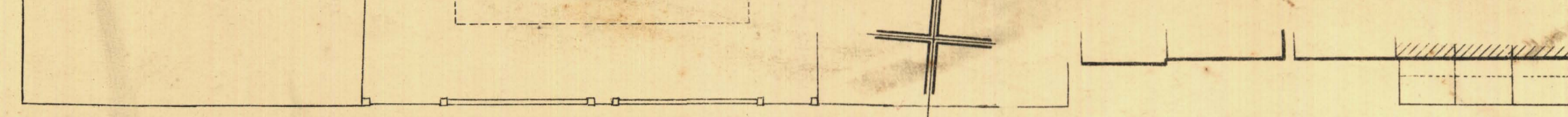
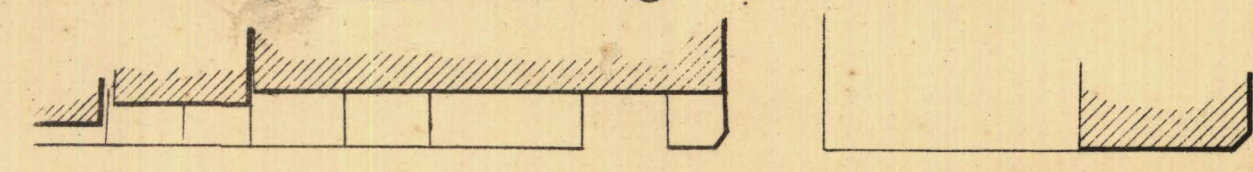
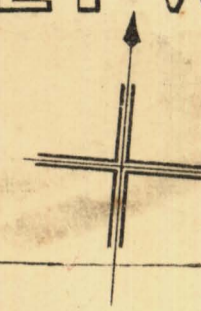
Sheet N°3

GREY WARD

KEY TO ADJOINING SHEETS

20	21	22
17	16	15
2	4	

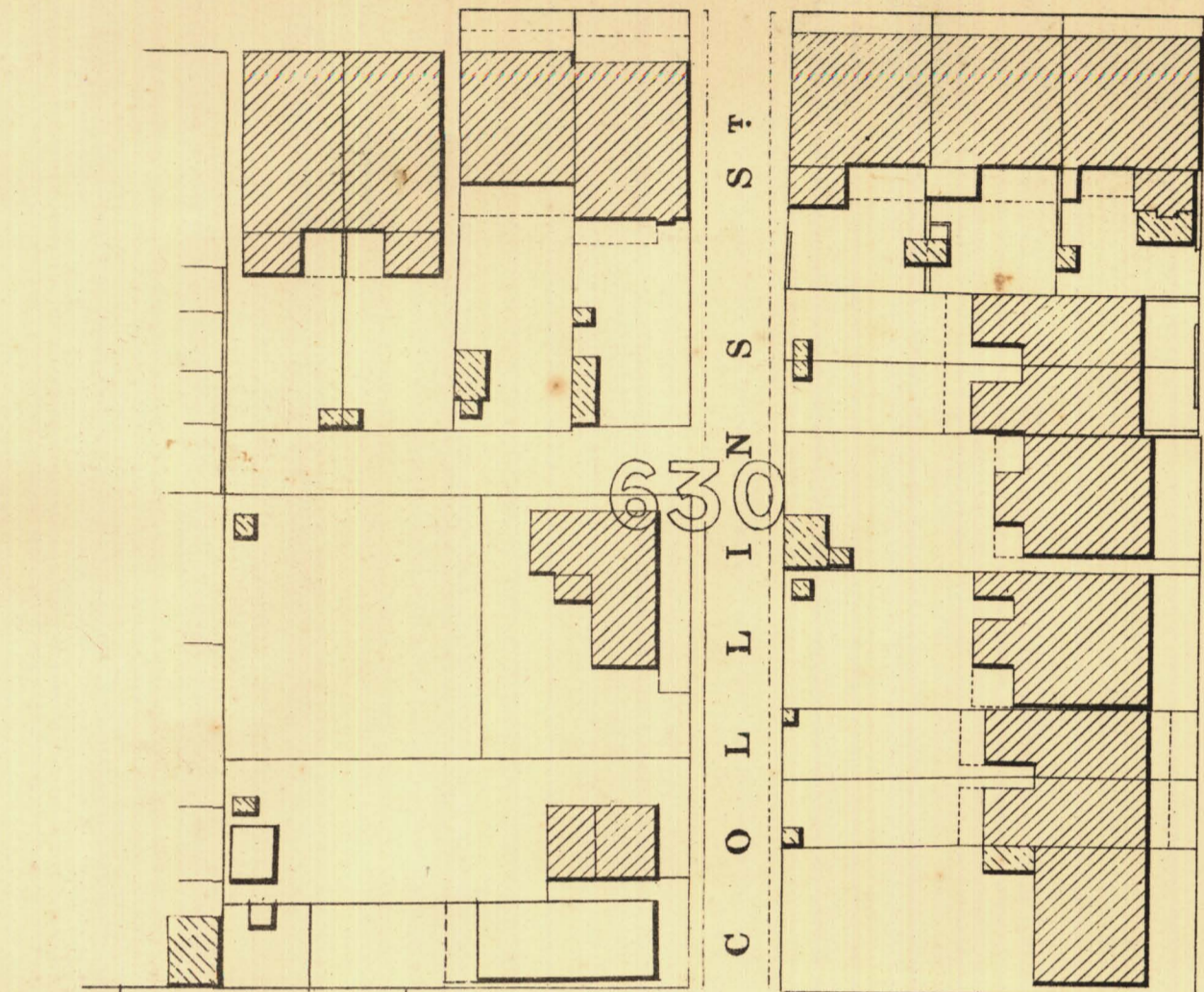
Bushmen's Club



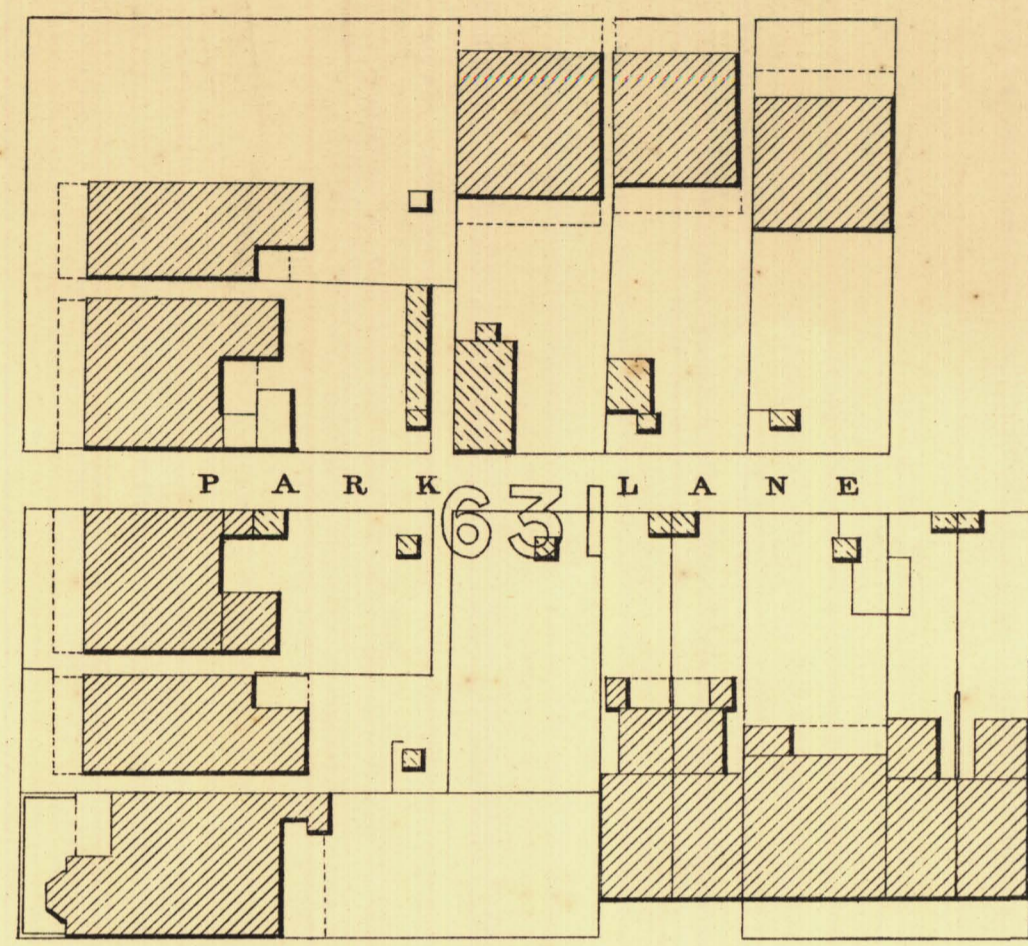
242.20

G I L B E R T S T R E E T

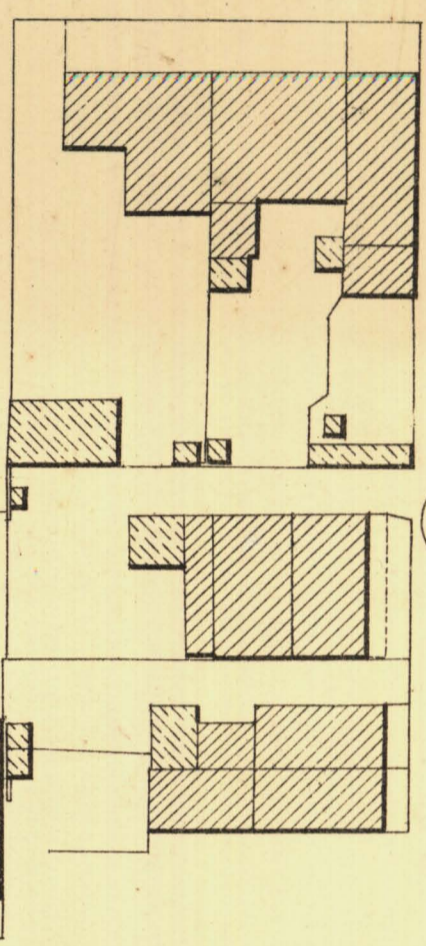
246.48



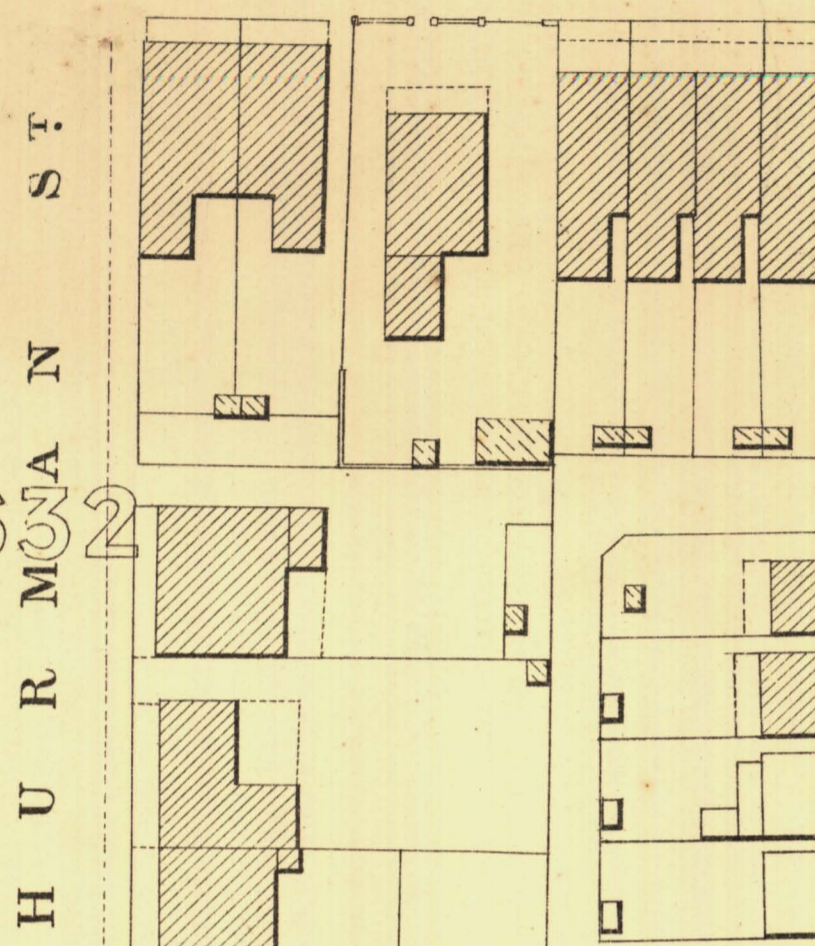
693



692



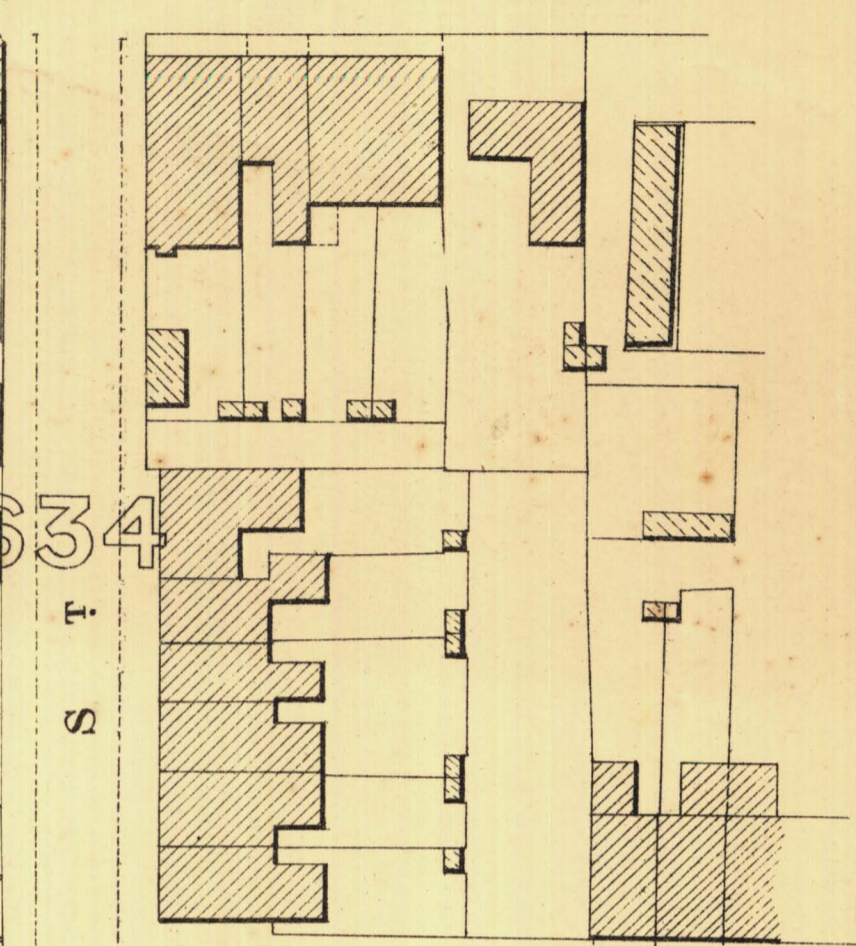
691



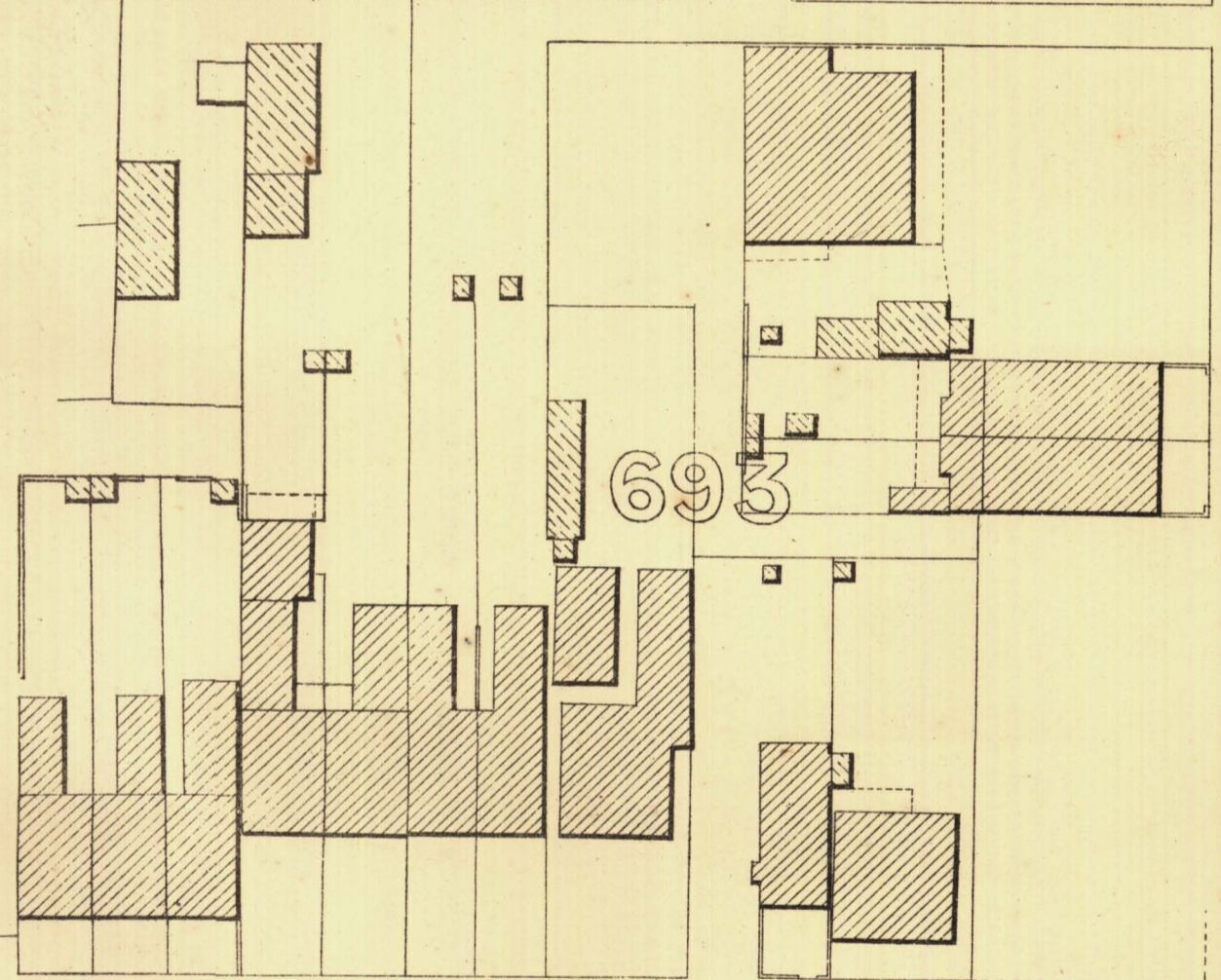
690



689



STAFFORD ST

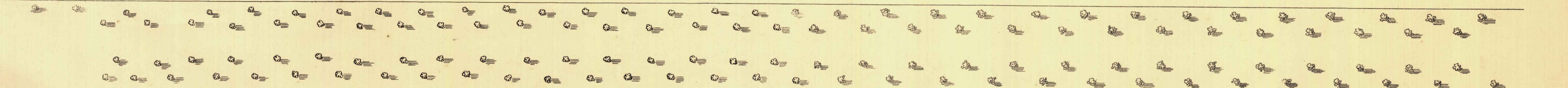


241.76

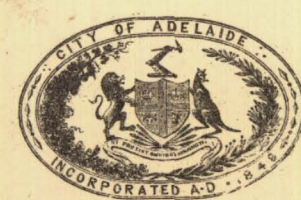
S O U T H T E R R A C E

243.64

Gate



P A R K L A N D S



L. Smith Mayor

Thomas ... Town Clerk

Scale Forty Feet to One Inch

100 Feet 50 0 200 300 Feet

SURVEYOR GENERAL'S OFFICE, ADELAIDE, DRAWN BY ...

REFERENCE

Town Acres shown thus	— [diagonal lines]	Fire Plugs shown thus	— [circle]	EP
Stone Buildings	— [hatched]	Stop-cocks	— [circle]	S.C.
Brick do	— [cross-hatched]	Stand-pipes	— [circle]	S.P.
Wood and iron do	— [diagonal lines]	Lamp-posts	— [circle]	L.P.
Pillar Post-offices	— [circle]	Telegraph posts	— [circle]	T.P.
Levels	— [dashed line]	229-31 Datum 100 Feet below Low-water at Port Adelaide		

Charles W. Smith

City Engineer Licensed Surveyor R.P.A.