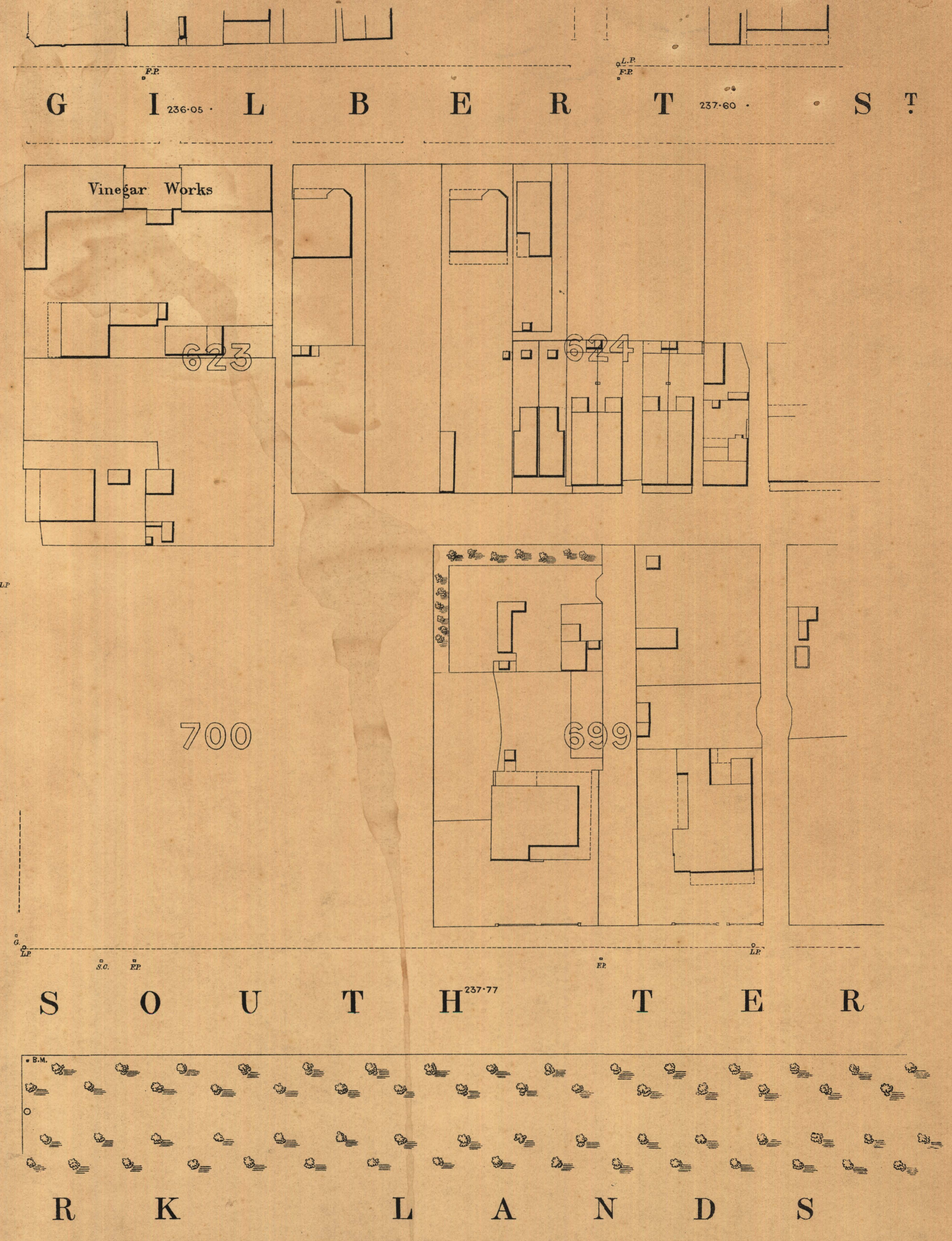
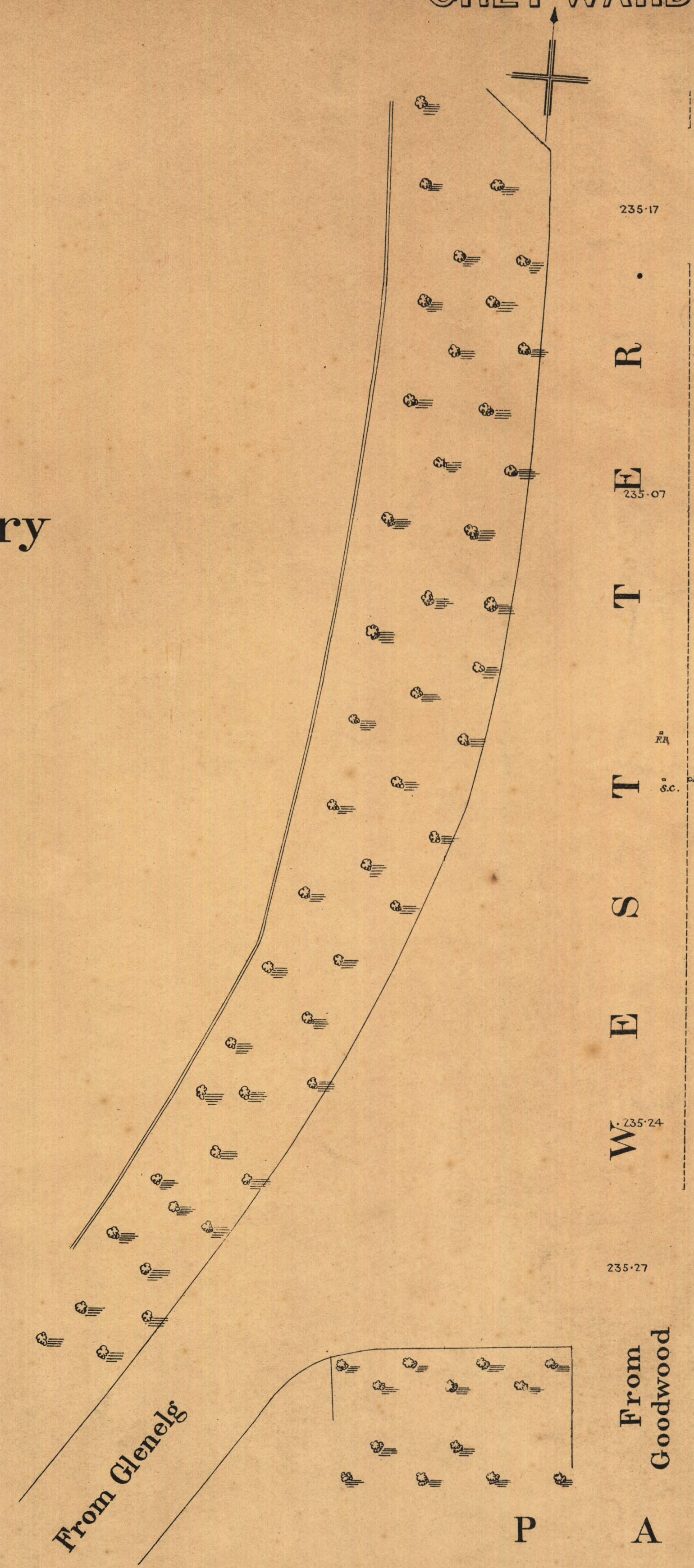


18	20	21
18	17	16
2	3	

West Terrace Cemetery



235-17  
R  
E  
T  
S  
E  
W  
235-07  
T  
S  
C.  
235-24  
235-27

*L. Smith* Mayor  
*Thomas Horne* Town Clerk



100 Feet 50 0 100 200 300 Feet  
 Scale Forty Feet to One Inch  
 SURVEYOR GENERAL'S OFFICE, ADELAIDE. Drawn S. Crawford. Photo-lithographed.

REFERENCE  
 Town Acres shown thus 141  
 Stone Buildings . . . . . S.C.  
 Brick do . . . . . S.P.  
 Wood and Iron do . . . . . L.P.  
 Pillar Post-offices . . . . . P.O.  
 Levels . . . . . 225-31 Datum 100 Feet below Low-water at Port Adelaide

Fire Plugs shown thus . . . . . F.P.  
 Stop-cocks . . . . . S.C.  
 Stand-pipes . . . . . S.P.  
 Lamp-posts . . . . . L.P.  
 Telegraph-posts . . . . . T.P.

*Charles W. Smith*  
 City Engineer  
 Licensed Surveyor R.P.A.