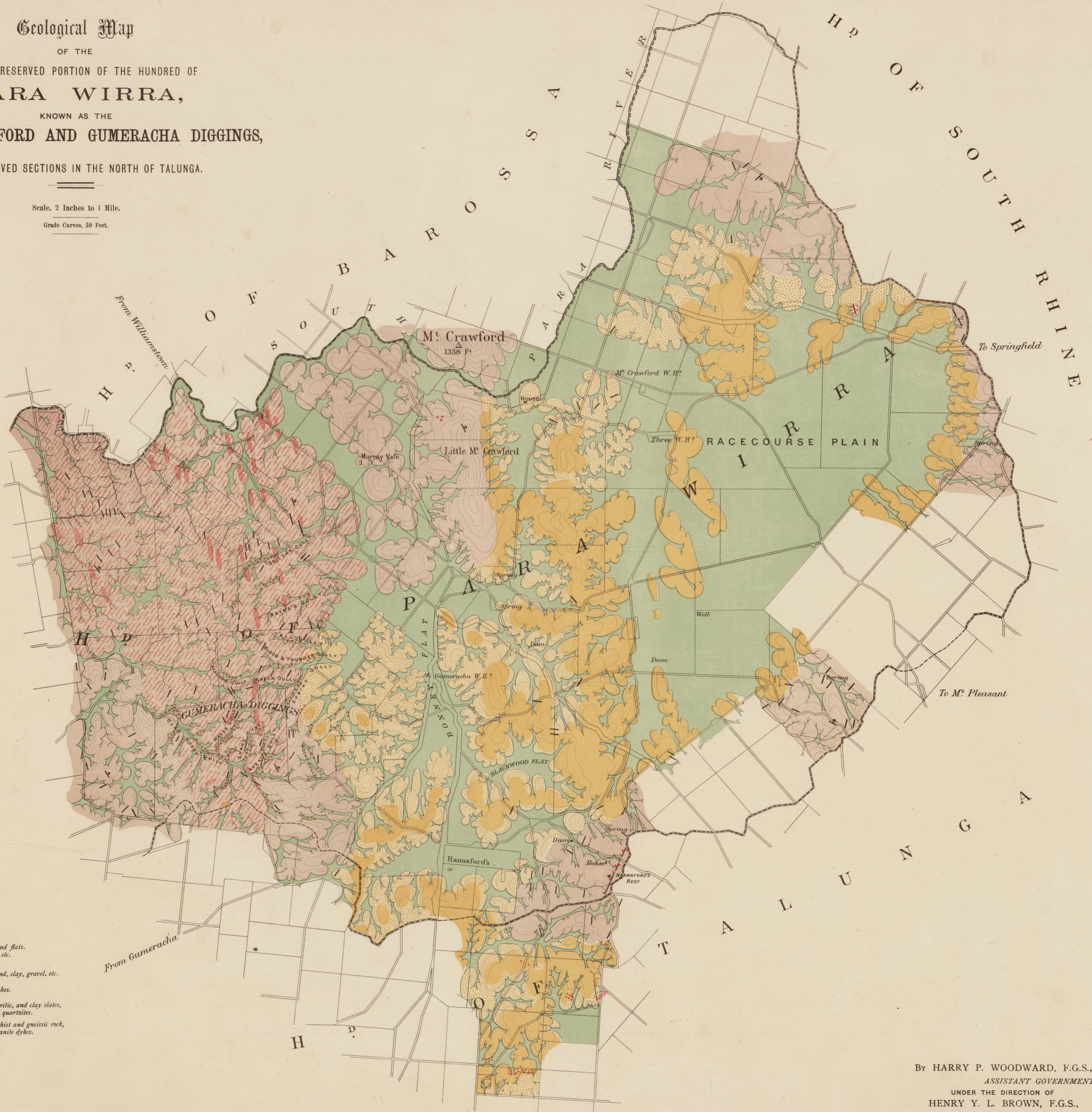
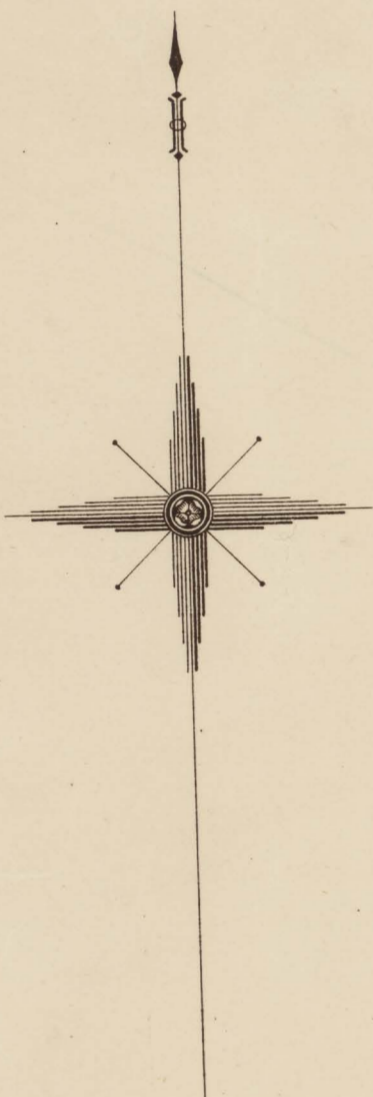


Geological Map
 OF THE
 EASTERN RESERVED PORTION OF THE HUNDRED OF
PARA WIRRA,
 KNOWN AS THE
MOUNT CRAWFORD AND GUMERACHA DIGGINGS,
 AND RESERVED SECTIONS IN THE NORTH OF TALUNGA.

Scale, 2 Inches to 1 Mile.
 Grade Curves, 50 Feet.



REFERENCE

- NEWER GOLD-DRIFT Alluvium of the gullies and flats.
Sand, clay, loam, gravel, etc.
- OLDER GOLD-DRIFT Made hills.
conglomerate (cement), sand, clay, gravel, etc.
- OLDER GOLD-DRIFT In cappings and thin patches.
- LOWER SILURIAN? (Bed rock) Micaceous, chloritic, and clay slates,
sandstones, and quartzites.
- HIGHLY METAMORPHIC (Bed rock) Mica schist and gneissic rock,
with granite dykes.
- GOLD WORKINGS.
- QUARTZ REEFS.
- GRANITE DYKES.

By HARRY P. WOODWARD, F.G.S.,
 ASSISTANT GOVERNMENT GEOLOGIST,
 UNDER THE DIRECTION OF
 HENRY Y. L. BROWN, F.G.S.,
 GOVERNMENT GEOLOGIST, SOUTH AUSTRALIA.