

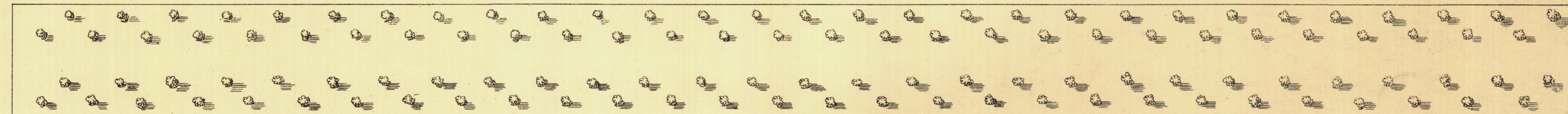
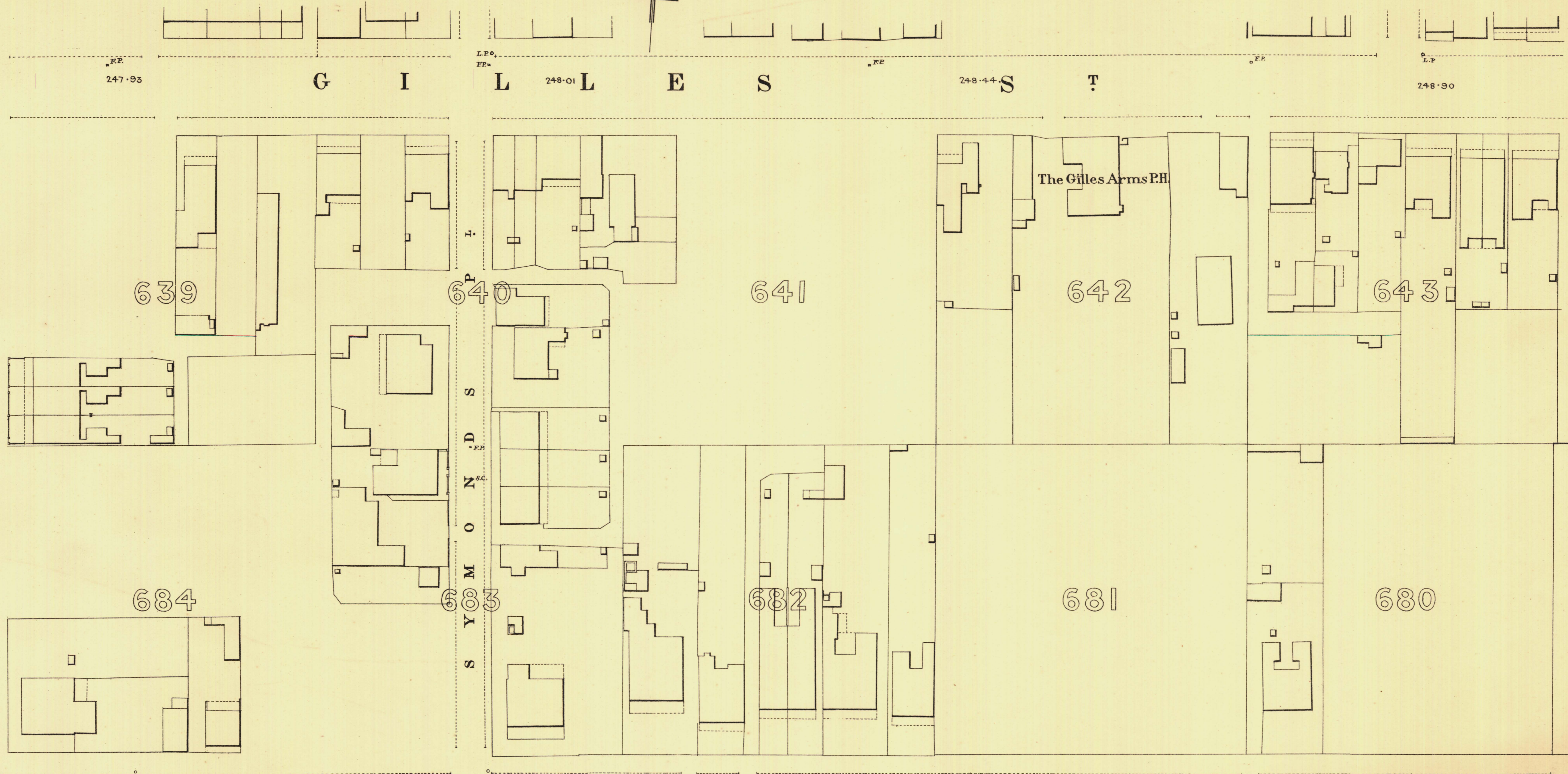
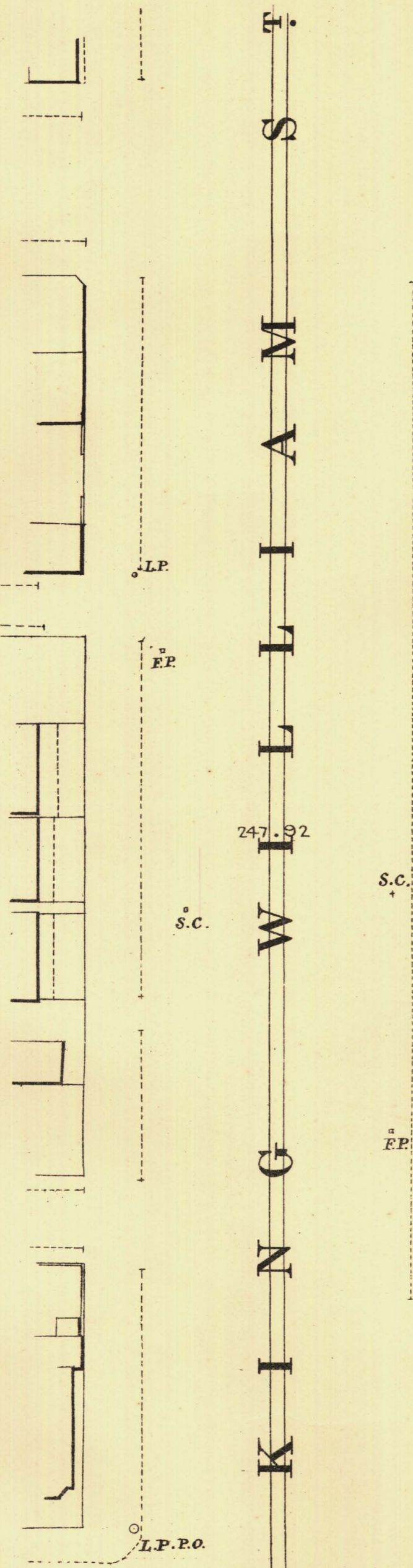
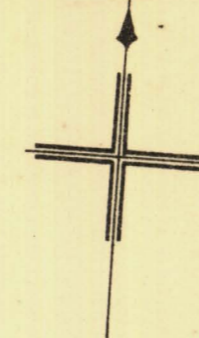
SOUTH ADELAIDE

Sheet No. 5.

YOUNG WARD

KEY TO ADJOINING SHEETS

22	23	24
15	14	13
4		6



A. & G. Railway



T. Smith Mayor

Thomas W. Smith Town Clerk

Scale Forty Feet to One Inch

SURVEYOR GENERAL'S OFFICE, ADELAIDE, THOMAS S. DRAKE, PHOTO-LITHOGRAPHER

REFERENCE

Town Acres shown thus - 144	Fire Plug shown thus - G.P.P.
Stone Buildings - [Symbol]	Stop-cocks - S.C.
Brick do - [Symbol]	Stand-pipes - S.P.
Wood and Iron do - [Symbol]	Lamp-posts - G.L.P.
Pillar Post-offices - P.O.	Telegraph-posts - T.P.
Levels - 225-31	Distances 100 Feet below Low-water at Port Adelaide.

Charles W. Smith
City Engineer
Licensed Surveyor R.P.A.