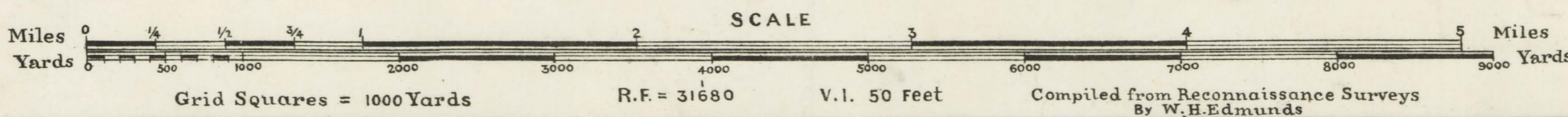
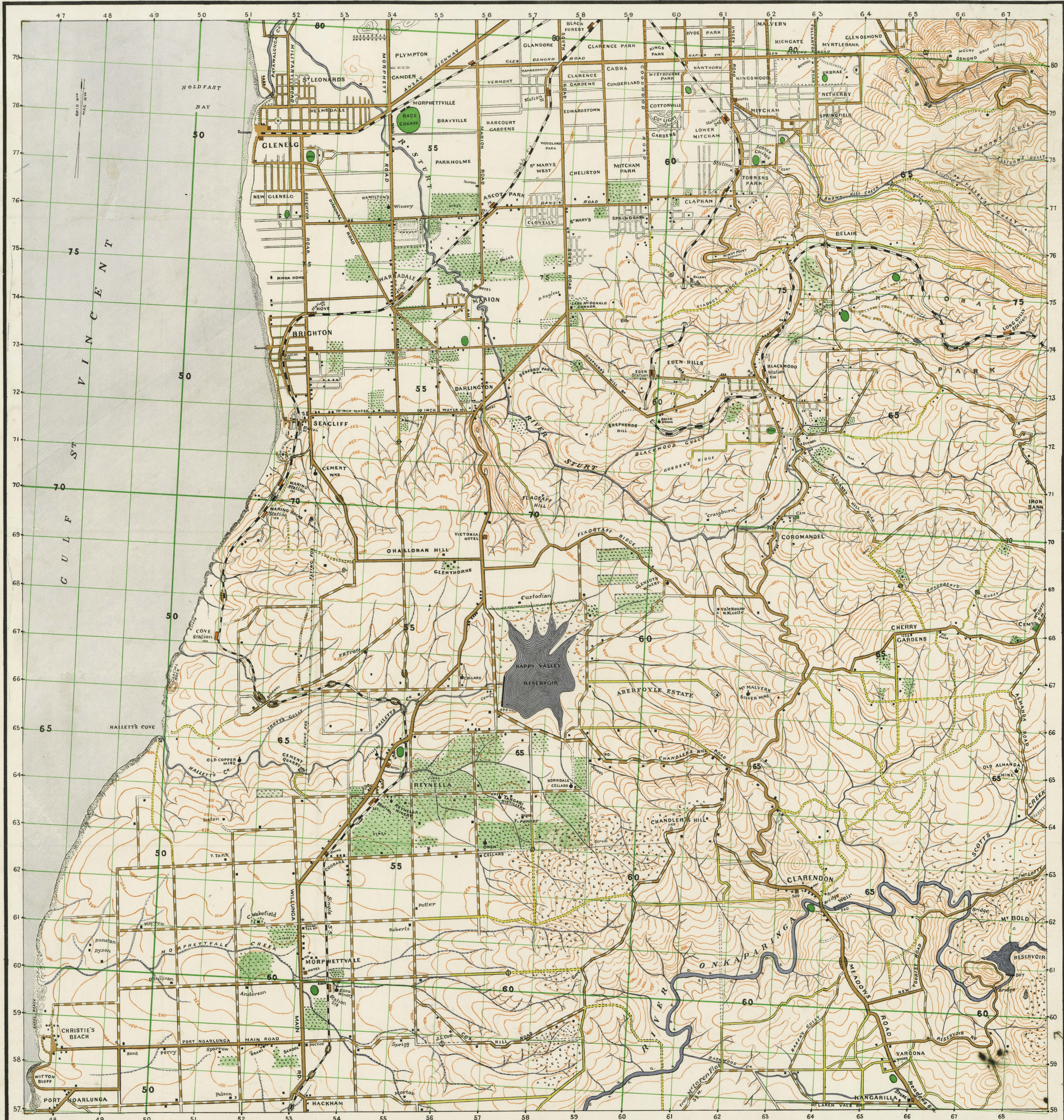


# GLENELG - CLARENDON AREA

- Main Roads ..... thus (thick brown line)
- Second Class Roads ..... (thin brown line)
- Inferior Roads ..... (yellow line)
- Impassable to Motors ..... (dotted line)
- Petrol Supply ..... (Red circle with 'P')
- Churches ..... (cross symbol)



- Hotels ..... thus (Red square)
- Power Works or Factories ..... (square with 'F')
- Orchards & Vineyards ..... (dotted green)
- House ..... (small square)
- Railway ..... (black line with cross-ticks)
- Tramways ..... (dashed line)



2306

Mr Edmunds stated (19/11/40) that this plan had been prepared by him for the Defence Department on great scale, and is probably inaccurate in places.

1940

Presented by Mr W.H. Edmunds

THE GOVERNMENT PHOTOGRAPHER, ADELIDE.