

Adelaide Plan No. 20.

Re Surveyed 26th February 1912.

Geo. P. Scarfe
Wholesale Hommengers

Harris & Co. Ltd.

Henry Barry & Co.
Hosiery Grocers

Holman's Foot
Hosiery & Manufacturing
Saddlers

Central
Hall

Start
Arade
Hotel

Adelaide
Arade

Reliance
Engineering
Works

R. P. Harper & Co. Prop. Ltd.
Merchants

Shops &
Sample Rooms

Hindmarsh
Buildings

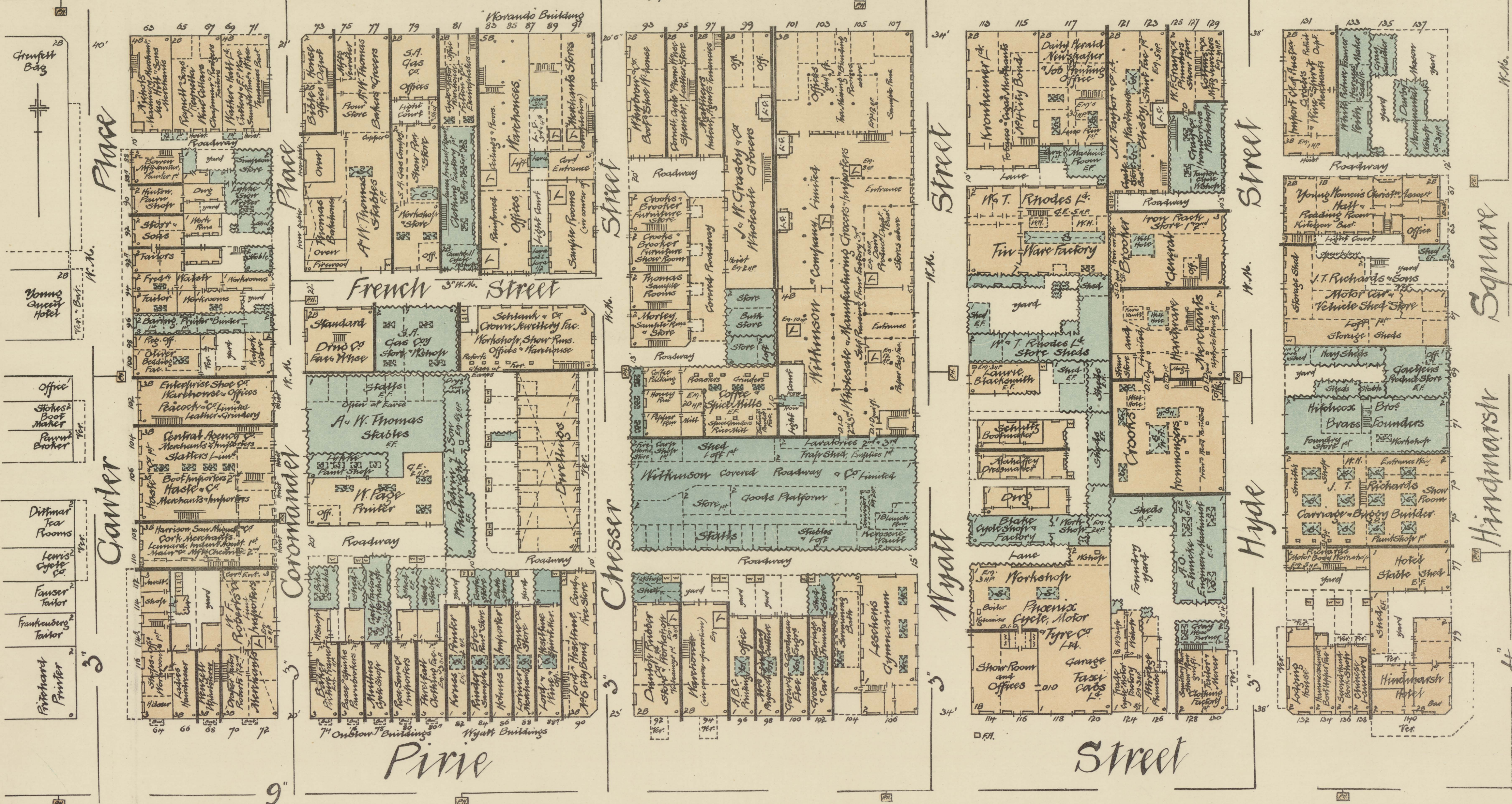
9"

Crenfell Street

4"

Street

11.11.



Macrom
Saw
Furniture
Warehouse

Eyes & Cronie Ltd.
Garage

Surveyed and Drawn
for the Fire Underwriters Association
of South Australia
by
J. R. Ferguson.

Continental
H. G. Rubber Co.
Prop. Ltd.
Garage

Scale 40 feet to 1 inch

Globe
Timber Mills

Adelaide S.A. 15th March 1912.